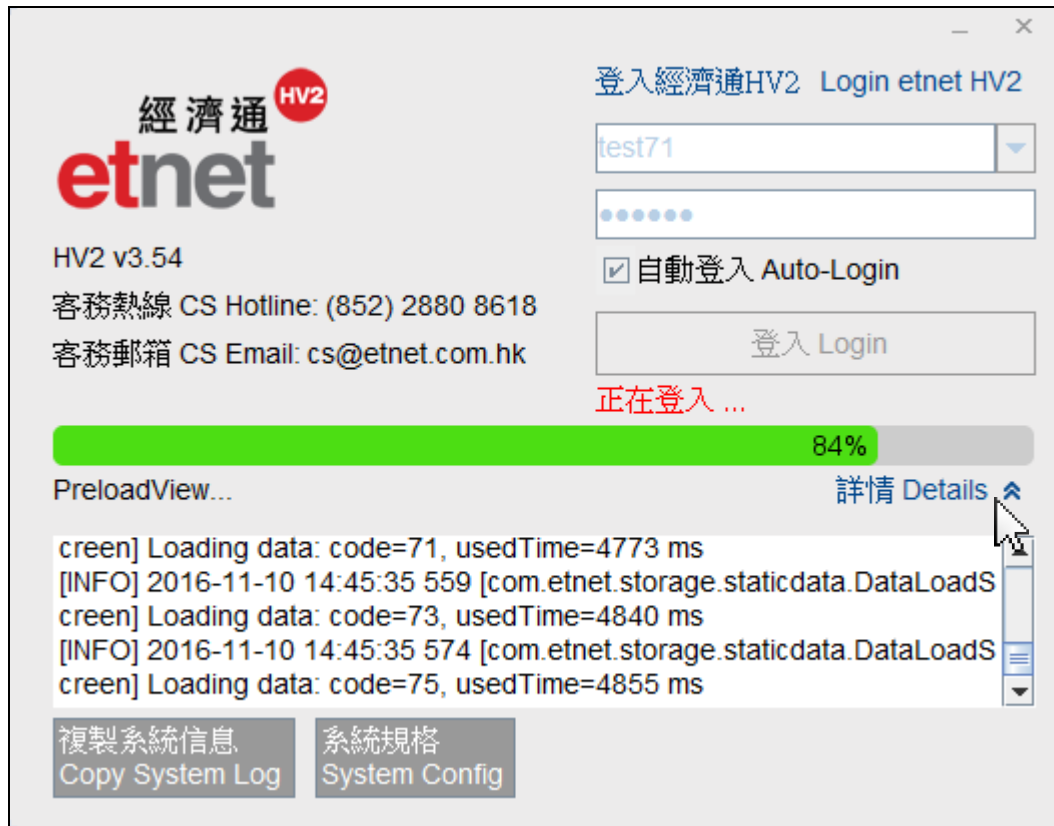


## General Operations

### 1.1 Start Up & Exist

#### Switch on ET Net



When you double click HV2 application icon, a popup login box will appear. Please enter user ID and password to login. You may also tick the “Auto-login” check box to remember the login information. After the loading procedure is 100% completed with green color, ET Net application will open up automatically.

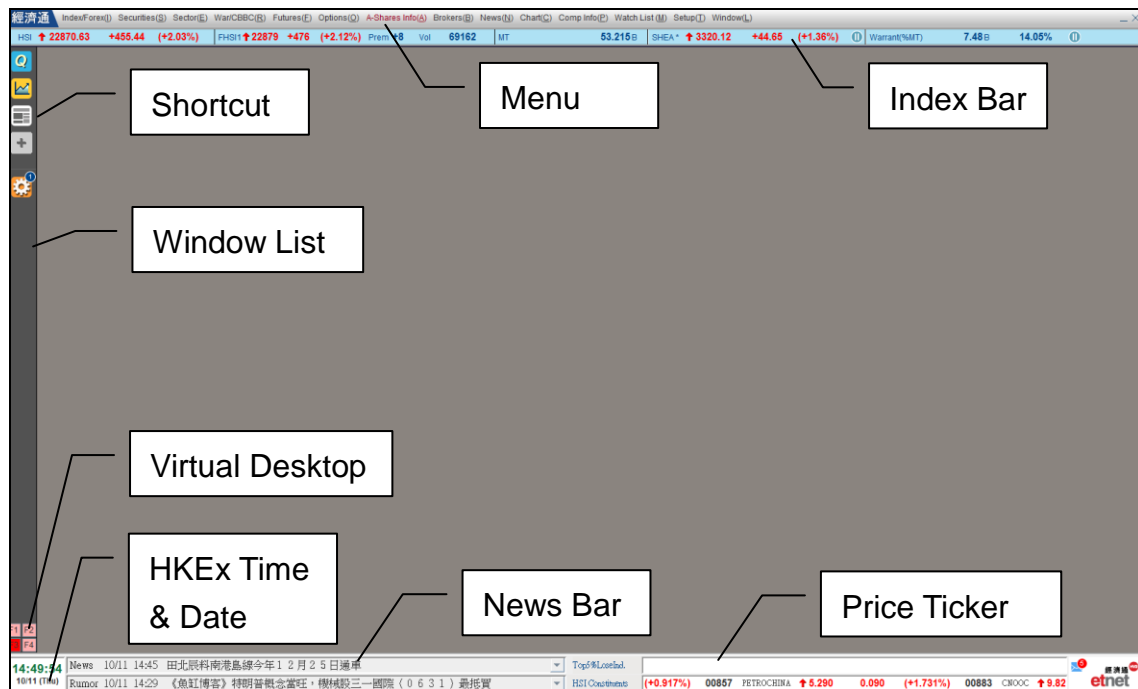
If you fail to login the system, please click “Details” button and press the “Copy System Log”. Then, save the text file and email to Customer Service Dept. for checking.

#### Exit ET Net

To exit ET Net program, you can click “Window” on the menu bar and press “Logout etnet HV2” to close the application. Or you may directly click the “X” button to end the program.

## General Operations

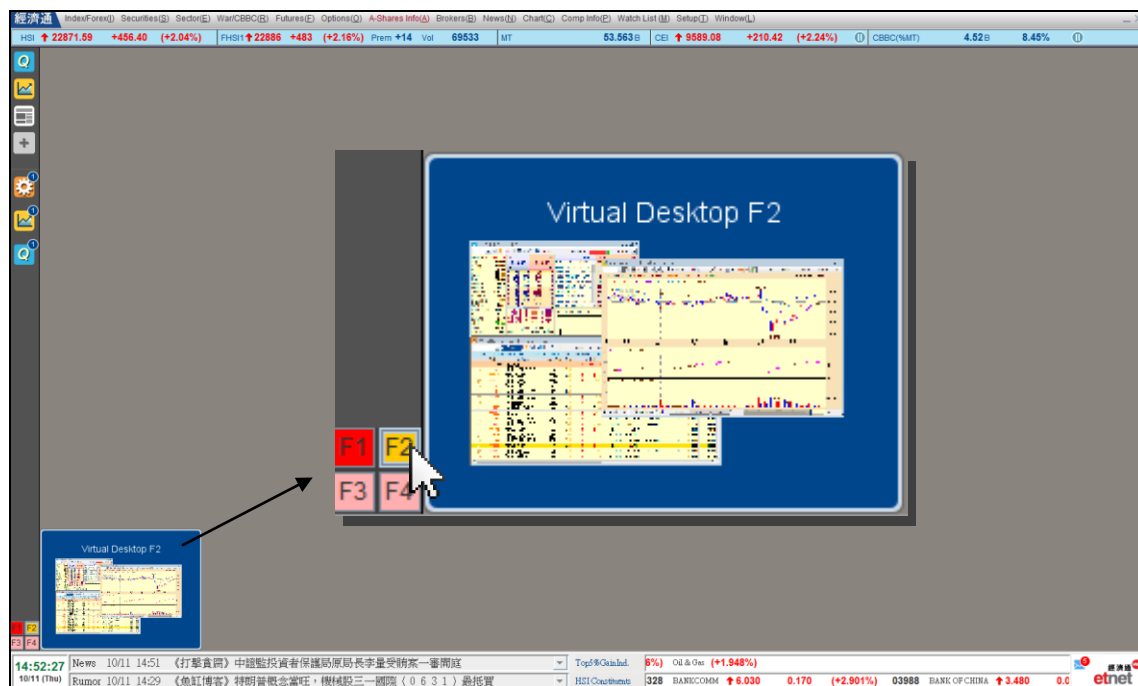
### 1.2 Screen Layout



After ET Net program is started up, you can see the financial information being categorized at the upper menu. Each category has a pull-down menu for selecting various market data.

### 1.3 Virtual Desktop and Switch Window Mode

#### View Virtual Desktop

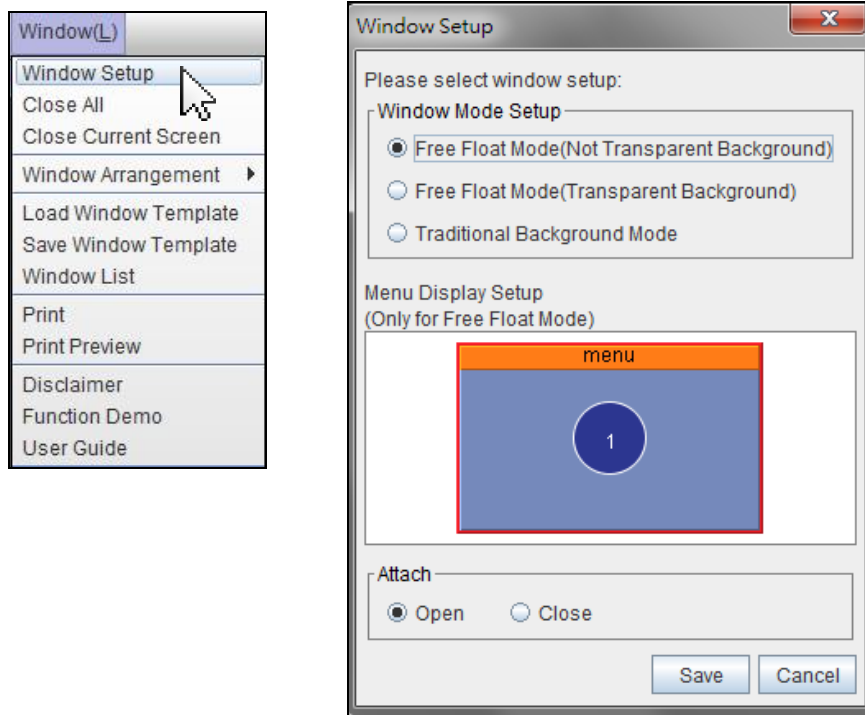


## General Operations

Virtual desktop is a tool to allow user make virtual copies of their desktop view-mode and switch between them with one single virtual desktop. It provides instant access on different features without loading file one by one. In addition, screens can be shared and independent from each other as well.

4 virtual desktop options are displayed at the left bottom corner of the program: Hot keys are F1 (Default), F2, F3 and F4. It can be accessed by mouse click on the options or press the short cut on keyboard. Current option will be highlighted with red color. A preview screen will be shown when mouse over to other options. You can also use the “Clone” function to share the window in other virtual desktop. For more details, it can be found in later chapter.

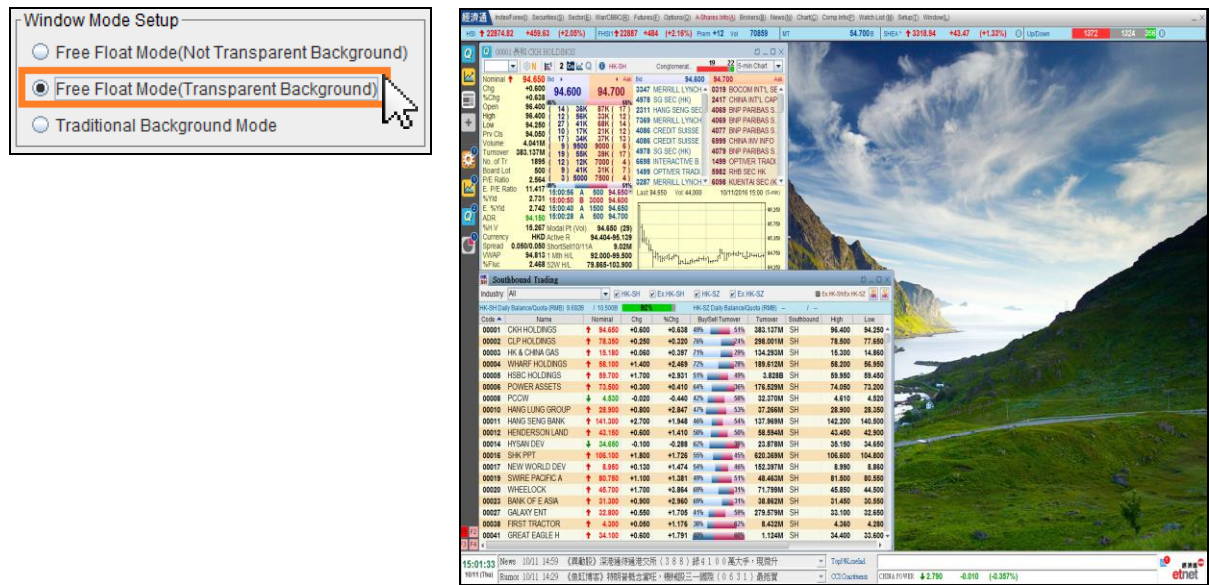
### Switch Window Mode



There are 2 available window operation modes. User can click “Window” from menu bar and select “Window Setup” to alter different view mode.

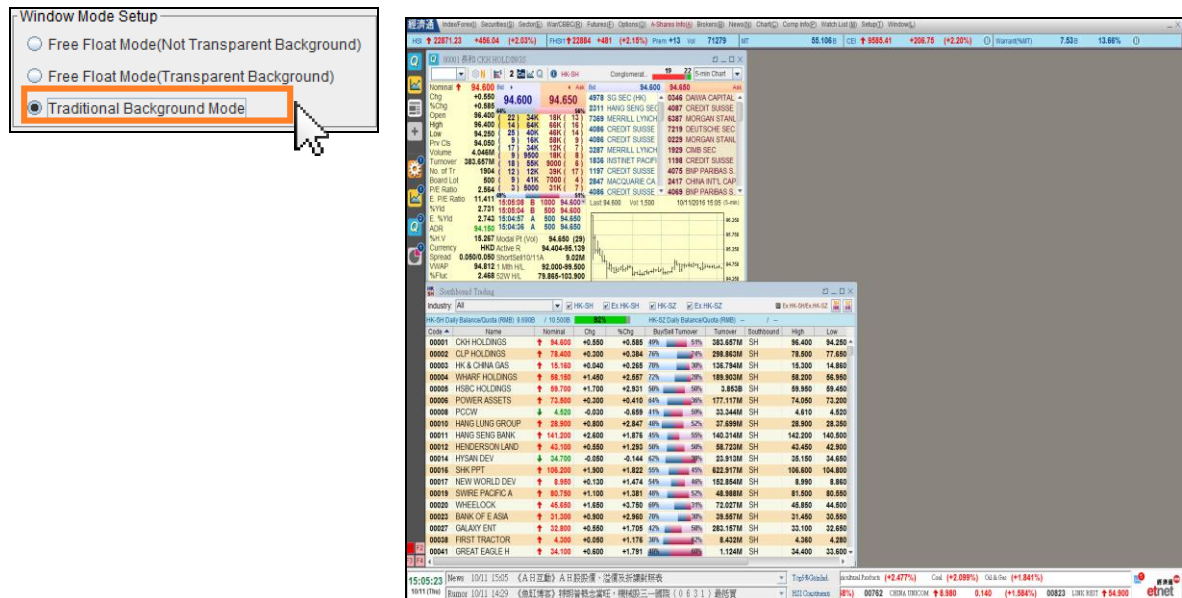
## General Operations

### a.) Free Float Mode (Transparent Background)



Free Float Mode enable user to view and operate HV2 with multi-platforms in one virtual desktop without overlapping windows at the same time, e.g. surfing internet, checking email and opening trading system. User can simply click the “Window Setup” and choose the “Transparent Background”.

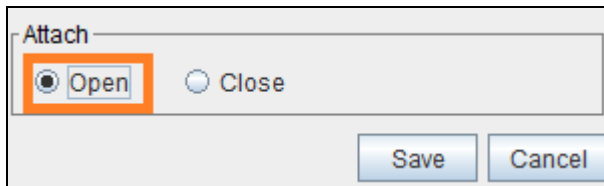
### b.) Traditional Background Mode



By choosing “Traditional Background Mode” in window mode setup, a full screen of grey color background will appear which looks like original HV style. It helps user get use on its operation and open more multiple windows as usual.

## General Operations

### c.) Attach



You can turn on the window attachment function and move the floating window to another window, the windows will automatically neatly attach together.

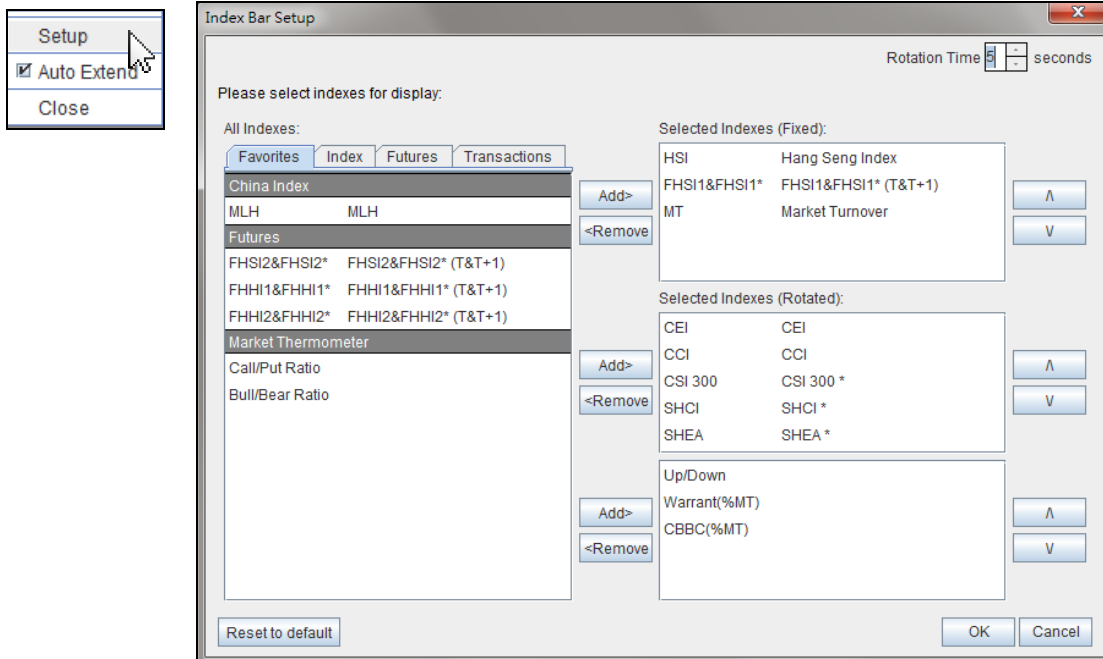
## 1.4 Setup

### a.) Index Bar

HSI ↑ 22871.23	+456.04	(+2.03%)	FHSI1 ↑ 22884	+481	(+2.15%)	Prem +13	Vol 71279	MT	55,106 B	CEI ↑ 9585.41	+206.75	(+2.20%)
----------------	---------	----------	---------------	------	----------	----------	-----------	----	----------	---------------	---------	----------

It displays different types of real-time local indexes or Futures, market turnover and the no. of stocks advanced/declined in a configurable index bar. User can select desired indexes, mainland indexes or Futures to be displayed from the setup dialogue box.

### Index Bar Setup



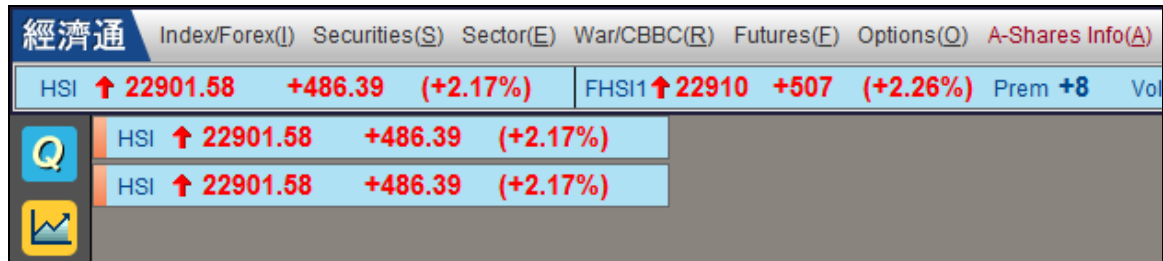
To change the display item on the index bar, you can right click the index bar by mouse. A Setup-Index Bar dialogue box will popup. All available indexes, Futures and data are divided into 4 tabs namely are Favorites, Index, Futures and Transactions.

User should choose the desired tab, select the item from corresponding combo

## General Operations

box to add or remove it to the fixed or rotated section and finally press “OK” button to confirm the change. For the fixed section, maximum of 10 indexes can be selected. For the rotated index, user may add it up to 20. The rotating time on index bar can also be adjusted.

### Add Floating Index Bar and Price Ticker

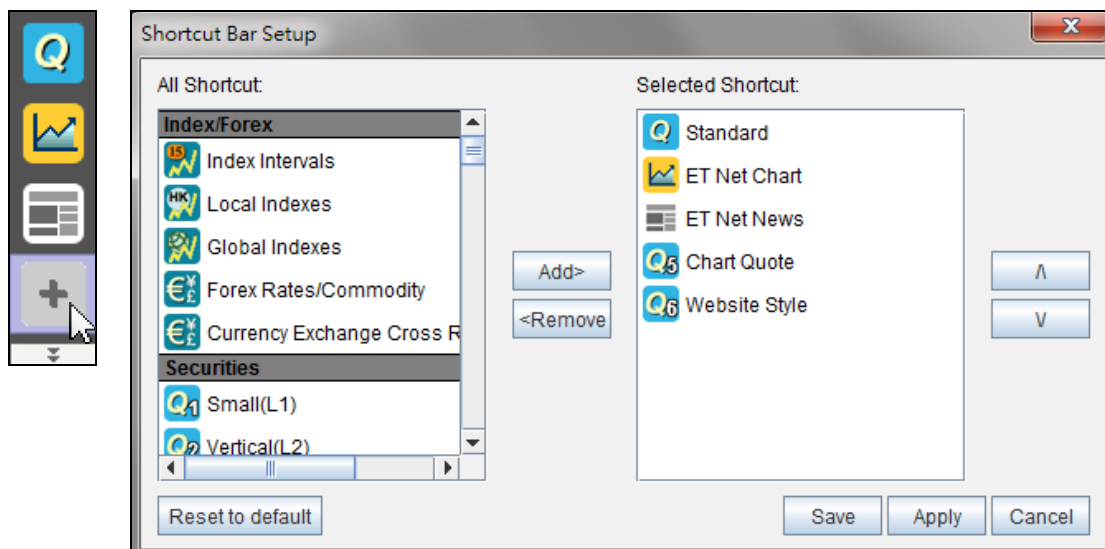


More index bars and price tickers could be added by choosing “Add Toolbars” from Setup menu. Newly added floating bar will have an orange label at the front and you can move the index bar to your desired position. By right-clicking on the index bar or price tickers, users can change the display options from the setup box.

### b.) Shortcut Icon Bar

Shortcut icon bar is placed at the very left hand side of the window. Users can find the information by one click or add their own shortcut icons for their favorite features as fast control.

### Create Shortcut

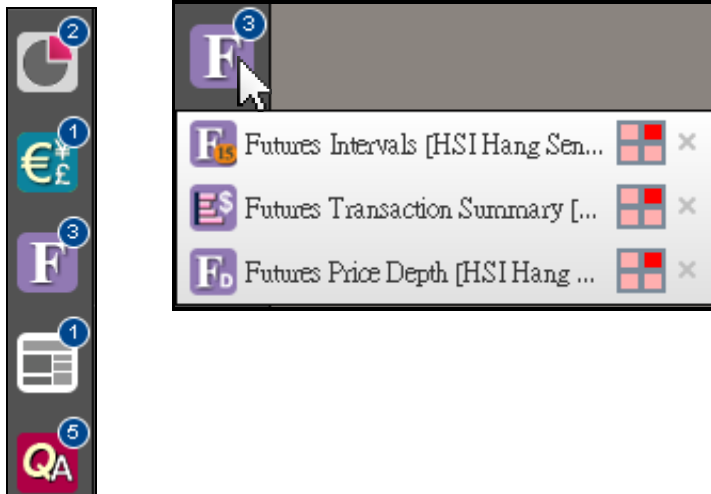


Hot items like Quote, Chart and ET Net News are built as default shortcuts. Users can click “+” button to open the shortcut setup dialog box. Then, highlight the function name which is needed on the left and press “Add” button. Desired

## General Operations

function will be found in the list of “Selected Shortcut”. User may click “Apply” or “Save” button to confirm the changes. This icon bar can support up to 10 shortcuts.

### c.) Icon Bar



An icon bar will be generated and shown in the window list at left hand side despite the functions are opened in different virtual panels. For example, user open 3 windows of Futures function in F1 & F2 mode, an icon bar with number “3” will mark at the upper right corner to represent the total number of windows being grouped. To check the position of grouped window on different virtual screens, user can click into the icon bar and drop down menu with “red grid” of corresponding window position will show up.

① Maximum number of windows open : **40**

### Screen Sharing Operation



Time	Open	High	Low	Last	Chg	%Chg	Turnover
Prv	23048.32	23048.32	21957.71	↓ 22415.19	-494.28	-2.158	50.813B
Today	22848.74	22918.34	22777.51	↑ 22881.64	+466.45	+2.081	22.943B
14:30	22876.05	22882.89	22859.70	↑ 22871.31	+456.12	+2.035	689.672M
14:45	22871.74	22884.61	22868.08	↑ 22871.68	+456.49	+2.037	643.613M
15:00	22869.02	22885.84	22863.84	↑ 22871.78	+456.59	+2.037	763.993M
15:15	22873.64	22893.32	22865.65	↑ 22885.08	+469.89	+2.096	817.266M
15:30	22883.05	22911.90	22873.66	↑ 22905.28	+490.09	+2.186	1.406B
15:34	22908.66	22908.66	22877.54	↑ 22878.93	+463.74	+2.069	364.757M
10SMA	22843.15	1month H	24064.50	P/E Ratio	10.301		
20SMA	23085.45	1month L	21957.71	E. P/E Ratio	11.576		
50SMA	23346.85	52week H	24364.00	%Yield	3.616		
250SMA	21424.67	52week L	18278.80	E. %Yield	2.924		

Hang Seng Index Futures NOV 22887 DEC 22912

## General Operations

User may view the function from window list and open it in the associated virtual desktop. If the screen is shared, there is a “Share” icon at the upper right hand corner for identification.

### Copy the Window



00001 長和 CKH HOLDINGS		HK-SH	
Nominal	↑ 94.600	Bid	Ask
Chg	+0.550	94.550	94.600
%Chg	+0.585		
Open	96.400	44%	56%
High	96.400	( 20 )	52K 23K ( 15 )
Low	94.250	( 13 )	81K 73K ( 12 )
Prv Cls	94.050	( 19 )	38K 22K ( 7 )
Volume	4.412M	( 10 )	11K 48K ( 8 )
Boa	Turnover	418.199M	( 19 ) 30K 13K ( 6 )
P/E	No. of Tr	2065	( 12 ) 12K 18K ( 8 )
E. P	Board Lot	500	( 10 ) 42K 8000 ( 5 )
%Y	P/E Ratio	2.562	( 3 ) 6500 80K ( 21 )
E. %	E. P/E Ratio	11.411	49% 8500 7000 ( 4 )
AD	%Yld	2.734	15:35:38 A 2000 94.600
H#	E. %Yld	2.743	15:35:29 A 500 94.600
10/	ADR	94.150	15:32:42 B 500 94.550
			A 5000 94.600


Each window has 4 basic buttons at the top right corner which includes “Copy”, “Minimize”, “Maximize” & “Close”. You may use copy function to open the same type of windows quickly. However, there is limitation for the number of screens to be opened in each feature.

### Window Grouping



00001 長和 CKH HOLDINGS		Group	
Nominal	↑ 97.400	Bid	Ask
Chg	+0.550	97.350	
%Chg	+0.568		
Open	97.400	55%	
Break 1mH	97.600	( 13 )	15K

1	2	3
4	5	6
7	8	9

For quicker access to relevant securities information, user can classified specific windows into 9 groups and each group contains 5 screens at maximum. Window with “Group”  button will allow setting the linkage between windows. The change of code under either section will change the code in other linked section.

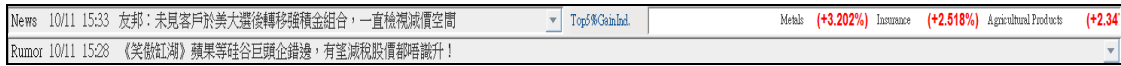
You may click the “Group” button at the top right corner of the window and choose the desired group number. The “Group” button will change to “Group



## General Operations

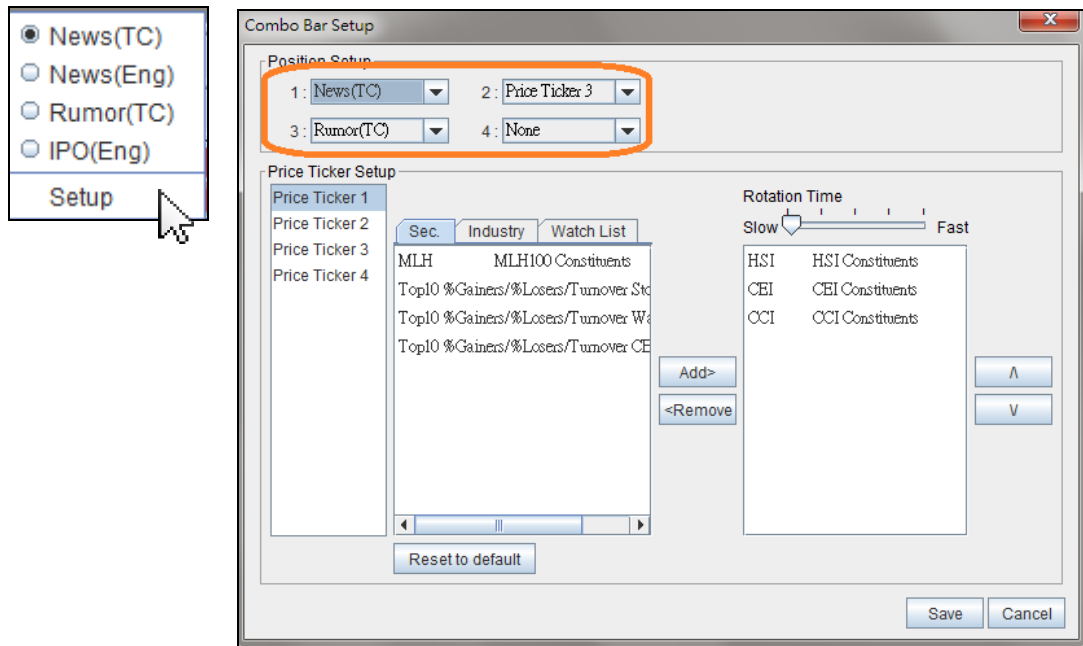
Number” for identification. After finished the grouping, you may save it as file for future use. To save it, you may click “Save Window Template” from the “Window” menu.

### d.) News Bar & Price Ticker



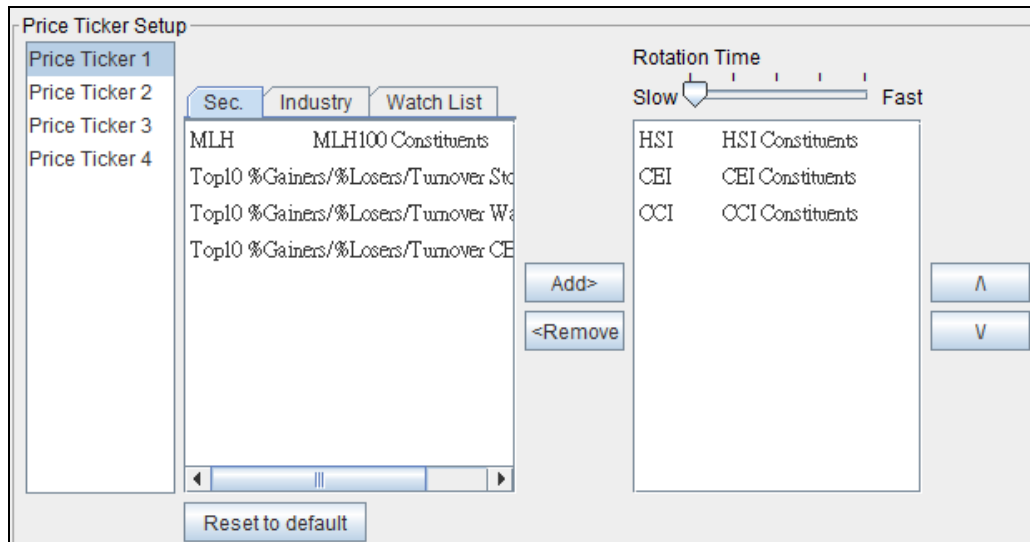
It displays different types of information in the news bar like real-time ET Net News, Rumor and etc. In price ticker, it displays real-time trading prices of different securities and rotate continuously with self-defined setting. User can select different types of information like Top 10 Gainers/Losers stock, watch list and etc.

### Setup



Mouse-over the news bar or price ticker with right click and press on “Setup” button. A “Combo Bar Setup” dialogue box will popup. You can change the position of ET Net news, rumor and price ticker bar to different area.

## General Operations



Besides, the price ticker contains 4 setting files. User can adjust the rotation time and choose to display different options like Securities, Industry and Watch List.

### e.) Code Search



It enable user to search the code easily by using auto-complete techniques. You may input the Chinese, English or Pinyin as search criteria. The matched results with Code, Chinese name and English name will show in the popup panel. You may double click the selected name to open its quotation.

### f.) Drag & Drop

Code	Name	Nominal	Chg	%Chg	Buy/Sell	Turnover	Turnover	High	Low
HSI	Hang Seng Index	22861.900	+446.710	+1.9			25.819B	22918.340	22777.510
00001	CKH HOLDINGS	94.600	+0.550	+0.5	48%	52%	481.175M	96.400	94.250
00002	CLP HOLDINGS	78.350	+0.250	+0.3	74%	26%	340.909M	78.500	77.650
00003	HK & CHINA GAS	15.120	0.000	0.0	67%	33%	162.863M	15.300	14.860
00004	WHARF HOLDINGS	58.050	+1.350	+2.3	72%	28%	235.013M	58.350	56.950
00005	HSBC HOLDINGS	59.750	+1.750	+3.0	49%	51%	4.642B	59.950	59.450
00006	POWER ASSETS	73.650	+0.450	+0.6	68%	32%	219.997M	74.050	73.200
00011	HANG SENG BANK	141.200	+2.600	+1.8	52%	48%	177.030M	142.200	140.500
00012	HENDERSON LAND	43.150	+0.600	+1.4	53%	47%	71.737M	43.450	42.900
00016	SHK PPT	105.800	+1.500	+1.4	55%	45%	799.741M	106.600	104.800
00017	NEW WORLD DEV	8.950	+0.130	+1.4	53%	47%	192.504M	8.990	8.860
00019	SWIRE PACIFIC A	81.150	+1.500	+1.8	55%	45%	65.890M	81.500	80.550
00023	BANK OF E ASIA	30.950	+0.550	+1.8	58%	42%	53.703M	31.450	30.550
00027	GALAXY ENT	32.850	+0.600	+1.8	44%	56%	407.212M	33.100	32.650
00066	MTR CORPORATION	42.450	+0.350	+0.8	57%	43%	125.462M	42.700	42.300
00083	SINO LAND	11.780	+0.280	+2.4	50%	50%	57.999M	11.840	11.620
00101	HANG LUNG PPT	16.780	+0.540	+3.3	65%	35%	46.863M	16.780	16.480
00135	KUNLUN ENERGY	5.780	+0.020	+0.3	63%	37%	34.370M	5.840	5.770
00144	CHINA MER PORT	20.050	+0.090	+0.4	42%	58%	49.427M	20.250	19.980
00151	WANT WANT CHINA	4.820	+0.160	+3.4	56%	42%	92.732M	4.850	4.700

## General Operations

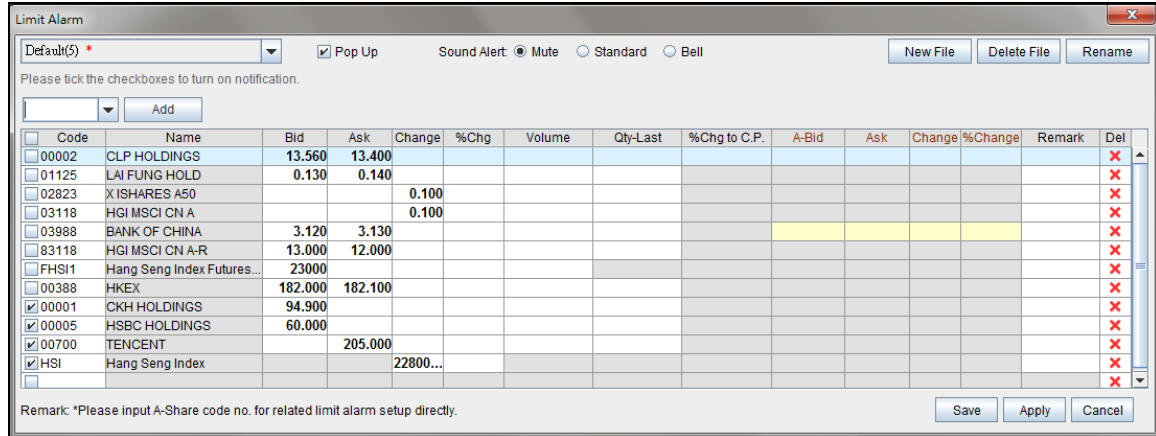
User can use drag and drop techniques to move the columns. First, you can move the cursor to the designated field. When the cursor changes to “Hand” icon, you can press and hold down the button on the mouse to grab the field. Drag the field to the desired location and drop the column by releasing the button. After editing, please remember to save the setting.

### g. ) Limit Alarm Report



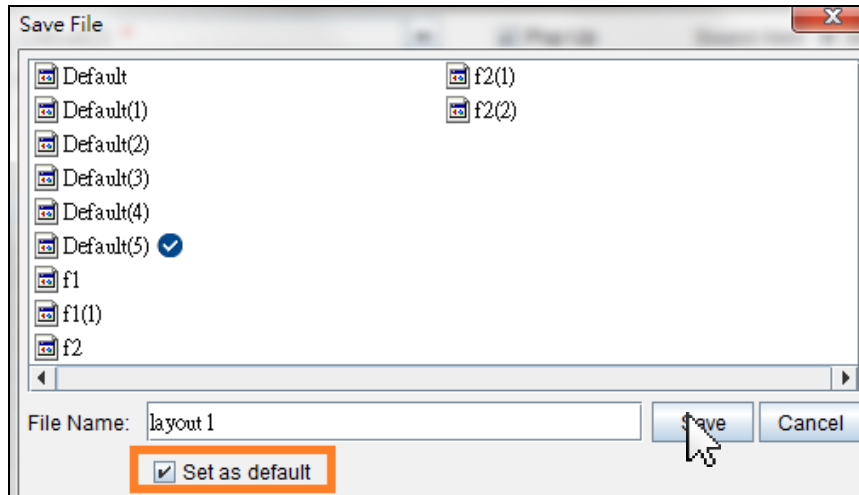
Limit Alarm Report is an alert function that an alarm report will show up whenever the limit is reached. You may also select flashing signal, pop up or sound alert as alarm notification. It can set up to 500 limits for securities, indexes and Futures.

### Setting Up Limit Alarm



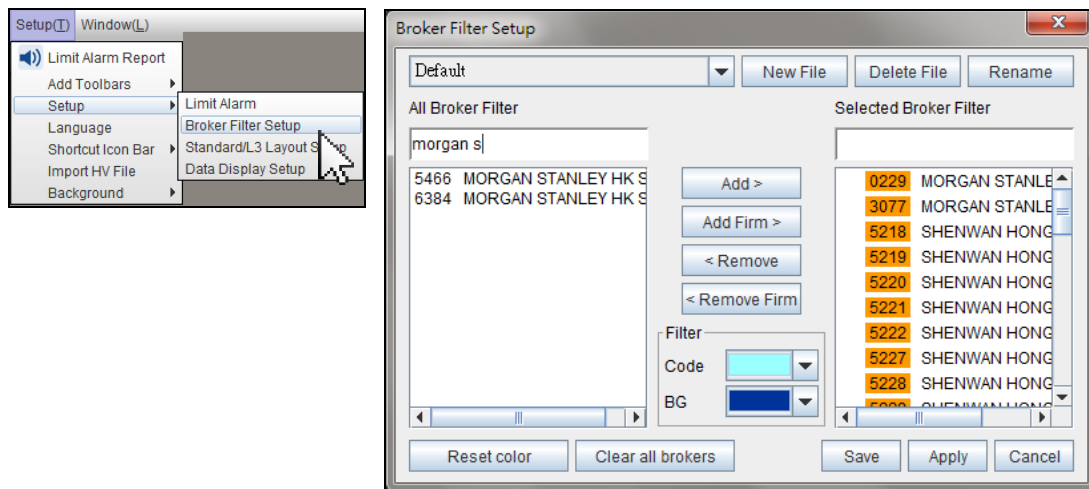
You may click “Setup” from the menu bar to open “Limit Alarm Report”. To add a limit alarm, you may type the code of the securities, indexes or Futures into the edit box. Then, enter the the value into the specific criterion which you intend to show up in the alarm report..

## General Operations



Besides, user can choose the alert notification as pop up and sound effect. After you have completed the setup procedures, you may save it as file. To save it, you may click the “Save” button and tick the “default” box as convenience.

### h.) Broker Filter Setup



Broker Filter function enables you to setup filter in broker queue displayed in the security quotation. You can select groups of broker and save the selection in a user defined file. Every time you activate the file as a display criterion on the broker queue, your selected brokers will be highlighted with different colour as you want and those do not match with your selection will not be displayed.

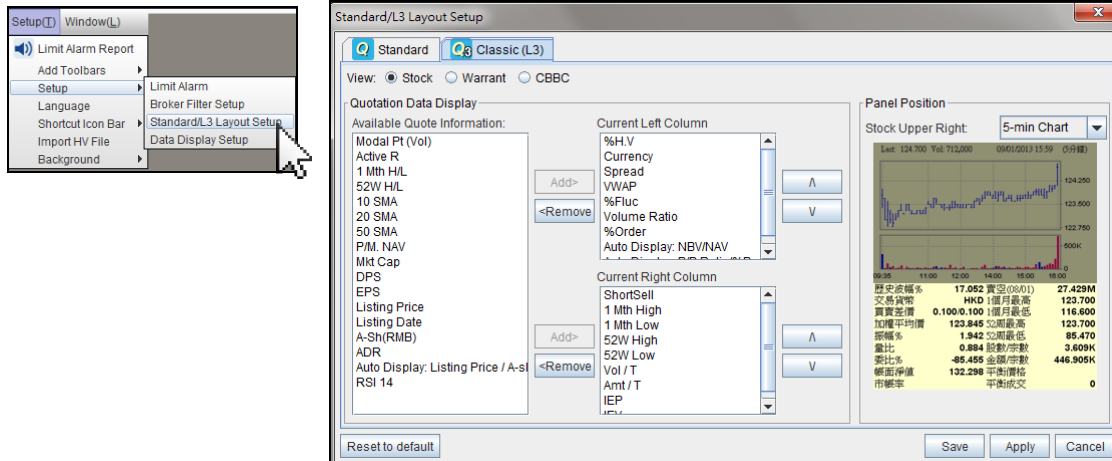
### Adding Broker Firm or Code

To add a broker, you may key in the broker code or type the broker name into the “All Broker Filter” edit box at the upper left of the window and press “Add Firm” or “Add” button. All broker numbers of selected firm or a specific broker

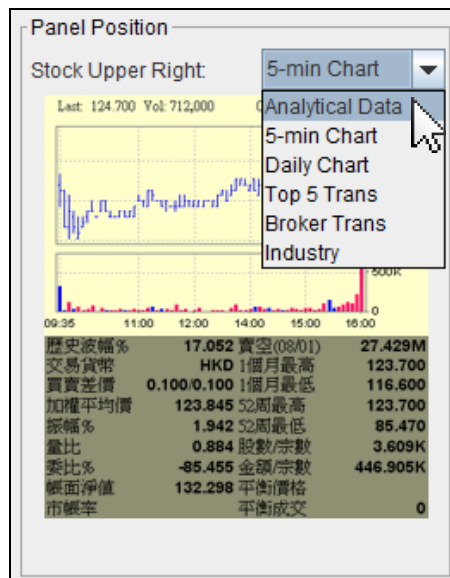
## General Operations

code will appear on the right list. You can add more brokers into the list by repeating the procedures above. User may also apply self-defined color in broker filter. After you have completed setup procedures, you may save it as file for future use.

### i.) Standard/L3 Setup



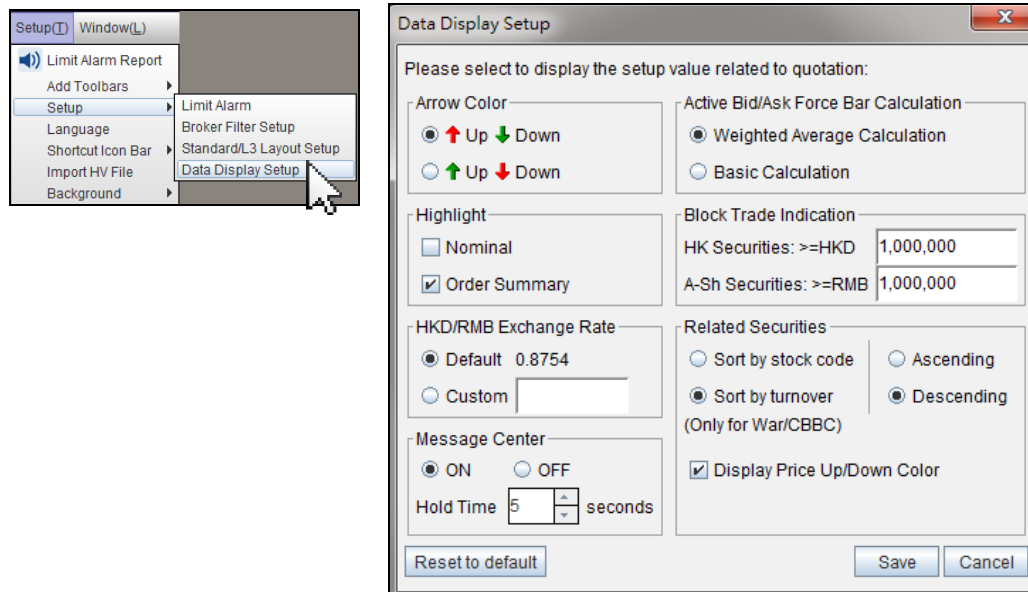
Users can manage the field display of the securities in the Standard Layout and Classic Layout (L3). You may open “Standard/L3 setup” from the Setup menu. A setup dialogue box will be prompt. You may select the available quote information on the left and click “Add” button.



A panel position is given at the top right hand side, user can focus the field list of current left or right column to imagine the position of changeable data after adjustment. For quotation of L3, 5-min chart is set as default information in upper right side. User is allowed to alter the panel as broker trans, top 5 trans or industry as desired. After the changes, remember to save it as file.

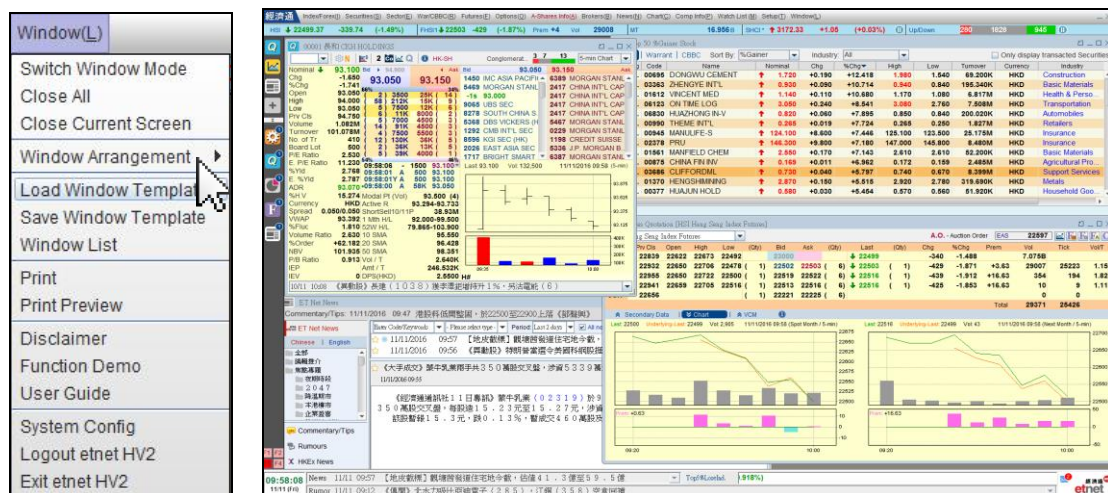
## General Operations

### j.) Data Setup



User can modify the display settings in quotation window. You may choose “Setup” and open “Data Display Setup”. There are 7 settings available which include Arrow Color, Highlight, HKD/RMB Exchange Rate, Message Center, Active Bid/Ask Force Bar Calculation, Block Trade Indication and Related Securities order.

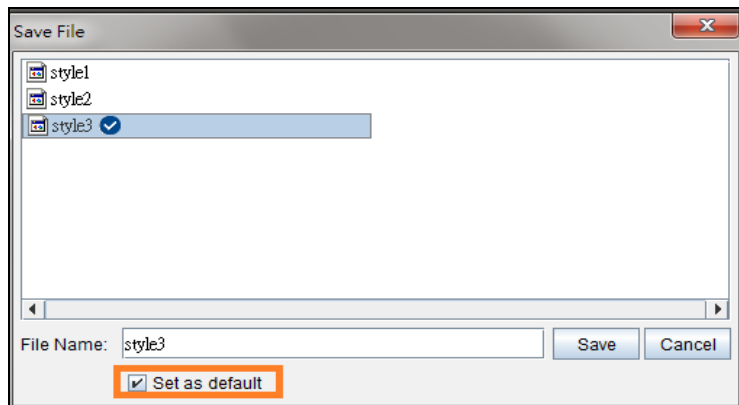
### 1.5 Save and Load Window Template



To be more user friendly, user can save the window size, font size and window positions as file, then all favourable windows will be opened while program start.

## General Operations

### Save File

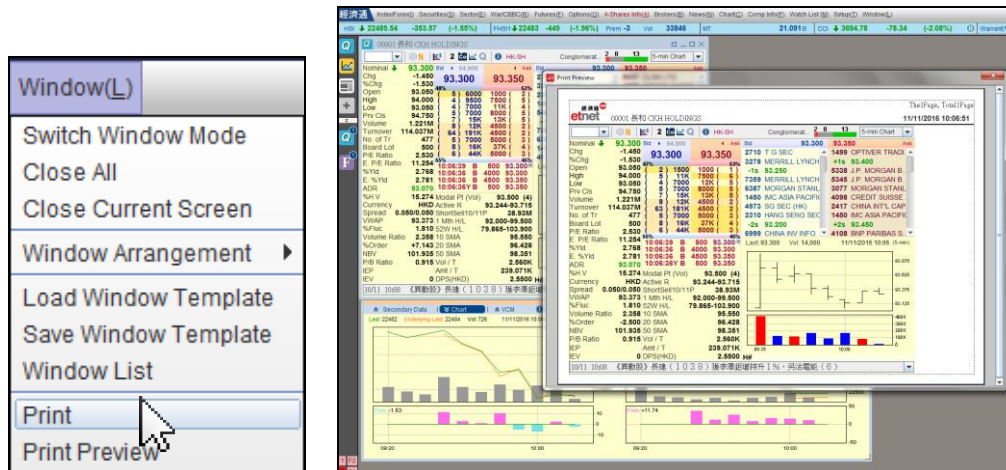


After you have completed the setup procedures, you may save it as file for future use. To save it, you may click “Save Window Template” from the “Window” menu. User can input the file name and save the layout as default file and the saved settings will automatically call out when you switch on the program.

### Load Setup

If you want to open the saved file of a window template, you may click the “Load Windows Template” from pull-down menu of “Window” and a dialogue box for open file will popup.

### 1.6 Print and Print Preview

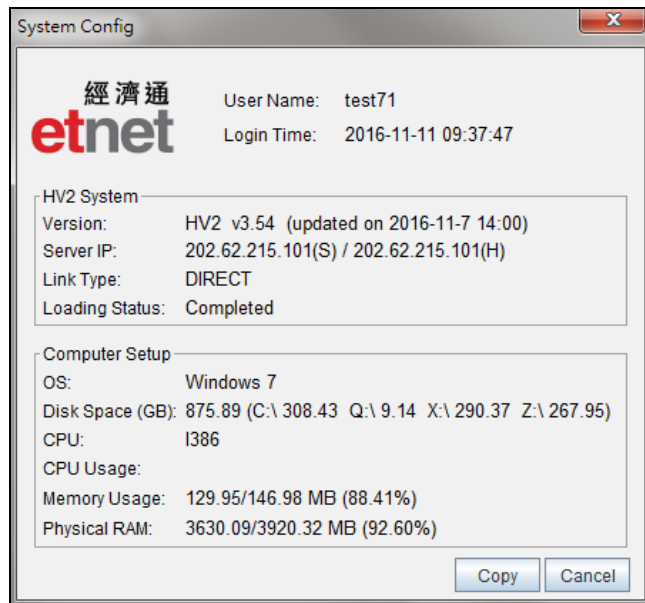


After connected to printer, you can click “Print” under the “Window” menu and it will print the screen of active window. You are able to preview the screen before printing by clicking the “Print Preview” under the menu bar.

Due to the large computer memories for carrying out a printing task, you are not encouraged to execute print jobs during trading hours. Otherwise, system performance may be affected.

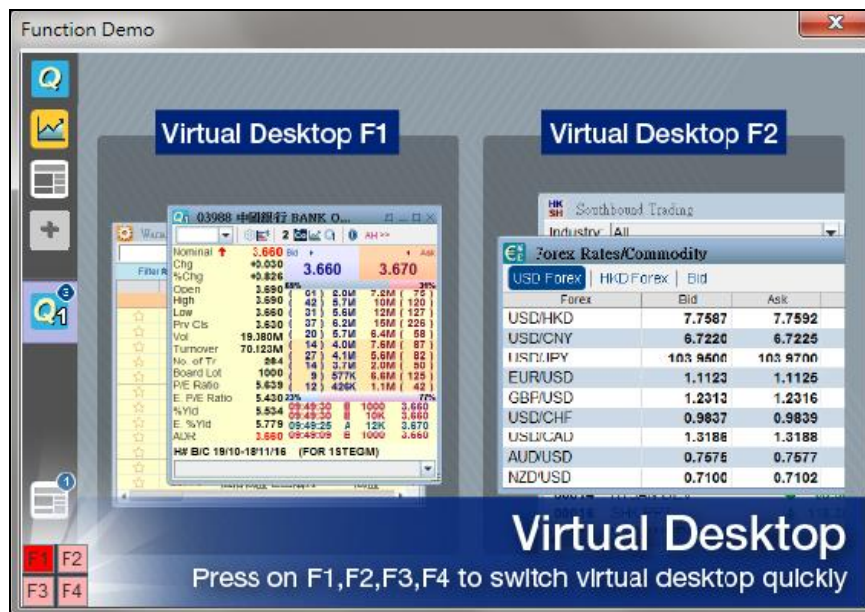
## General Operations

### 1.7 System Config



To check for program details, such as the version and user ID, you may click “Window” button on the menu bar and select “System Config”, and a message box with these information will popup.

### 1.8 Function Demo



To check for the the latest features of ET Net program, you can click “Window” on the menu bar and then click “Function Demo”. A popup window will display and you can read for details.