

## Using Display Options (Charts)

### 2.10 Charts

#### 2.10.1 ETNet Chart



It provides both real-time intra-day charts and historical charts of all indexes, futures and securities. Except those commonly used technical analysis such as Bollinger Bands, MACD and RSI etc., advanced technical indicators are newly-added, like chart comparison which facilitates user to make anticipation. In addition, event chart is now available for user to check the effects of any special events on that security, index or futures.

① Maximum number of windows open : **12**

## Using Display Options (Charts)

### Selecting Securities, Indexes and Futures



To retrieve a chart of a security, User may click the combo box at the upper left corner. Then, type in the security code or by Pinyin or English input method. To retrieve an index or futures chart, user may click the down-arrow button of the combo box. A list of indexes and futures will be displayed and you may click to show the corresponding chart information.



The system will automatically label the highest and the lowest price of that chosen period for user's reference.

## Using Display Options (Charts)

### Chart Function Keys



Hand Cursor: Click on the chart and drag left or right to adjust the displaying time zone.



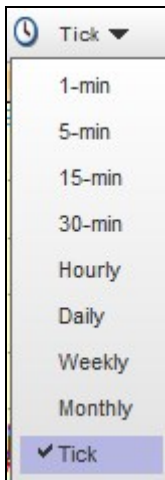
Record Selector: Click on the button and move the mouse pointer on the chart, the corresponding prices, like date, open/high/low/close price and the value of technical analysis data will be shown on upper left corner.



Value Cursor: Click the button and move the mouse pointer on the chart, a cross line will appear and corresponding price will be displayed in the green text box on the right hand side of the chart.



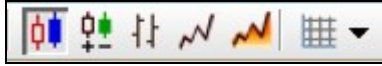
Zoom Box: Click this button and then select a particular area to be viewed. The '+' button can display a shorter time period and the '-' button can display a longer time period.



Selecting Interval : It offers minutes, daily, weekly and monthly chart for indexes, futures and stocks.

Tick Chart: Tick chart is available for Futures contract, user can view it by choosing the time interval as "Tick". While message of "All Day Data is Loading" is disappeared at the top left-hand corner, the tick chart is fully loaded and new transaction will be updated continuously. User is allowed to open 4 windows for Futures Tick Chart at the same time.

## Using Display Options (Charts)



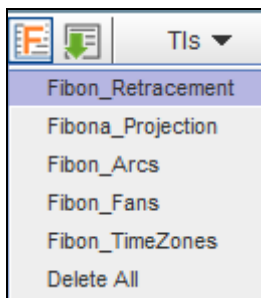
Selecting Chart Style and Grid Line: User may click “Candlesticks”, “Bar”, “Line” or “Area” button to select one of the chart styles to display. You may also click on the pull-down menu besides the “Grid Line” icon to add grid lines on the chart; this helps you to read the figures more easily.



Candlesticks(Price Up/Down): Besides using hollow and filled body to compare the opening and closing price of the day, the candlesticks will be displayed in red or green to distinguish the up and down of price.



Log Scale Chart: To view semi-log chart, you may click this button at the top of Chart window.



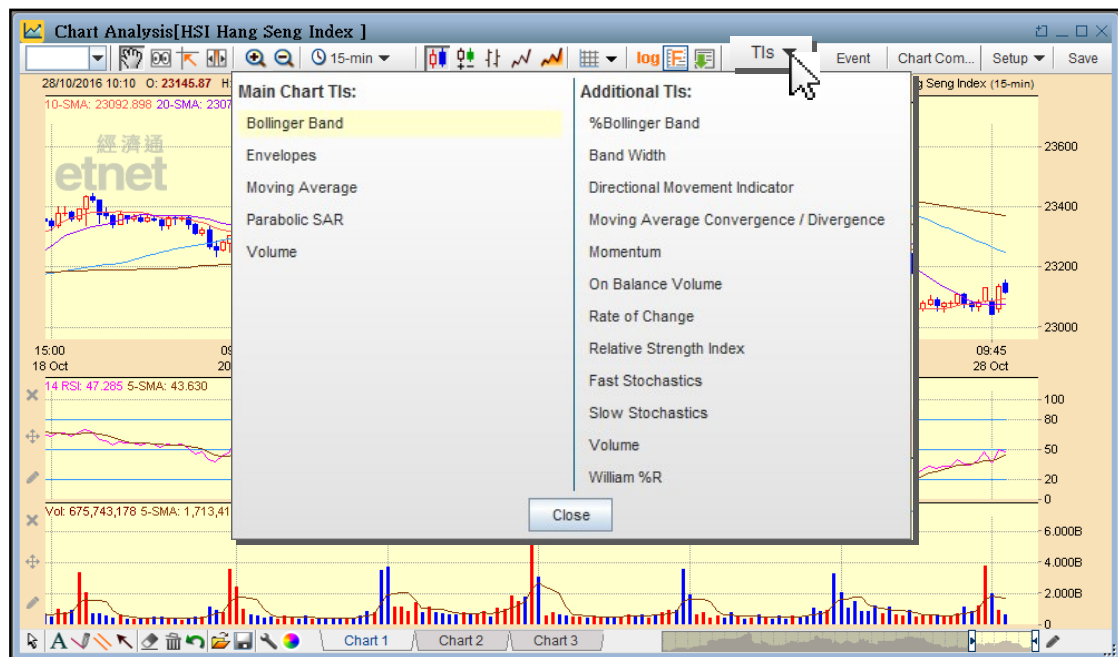
Fibonacci Ratio: You may click on this button to choose the analysis you want. It contains 5 analysis, including retracement, projection, arcs, fans and time zones. These help you to identify the supporting and resistance levels of stock market or individual securities.



Export to Image: You may click this button to export the modified chart to your own computer. It supports the image in .gif, .png, .jpeg format. User may print it out for further reference.

## Using Display Options (Charts)

### Technical Indicator Setting

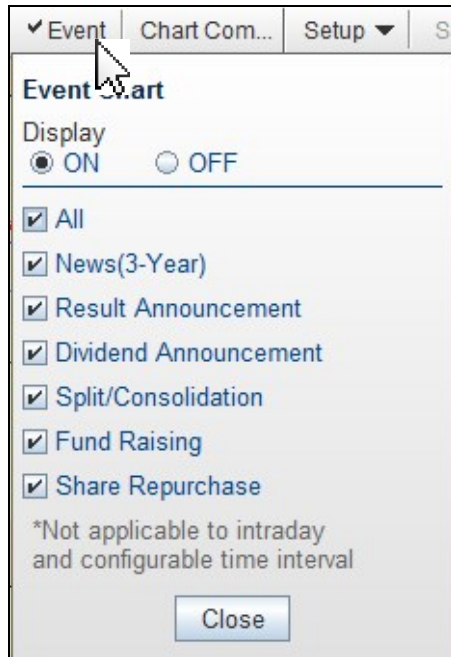


User may click the “Technical Indicator” button at the top and select the desired technical indicators from the menu to help you making more precise analysis and decision.

For Main Chart, it can display maximum 5 indicators, including Bollinger Band, Envelopes (ENV), Moving Average (SMA), Parabolic SAR (SAR) and Volume (VOL). For Additional Tis, it can show maximum 4 indicators, including: % Bollinger Band (%B), Directional Movement Indicator (DMI), Moving Average Convergence/Divergence (MACD), On Balance Volume (OBV), Relative Strength Index (RSI) and Williams' %R etc.

## Using Display Options (Charts)

### Viewing Event Chart

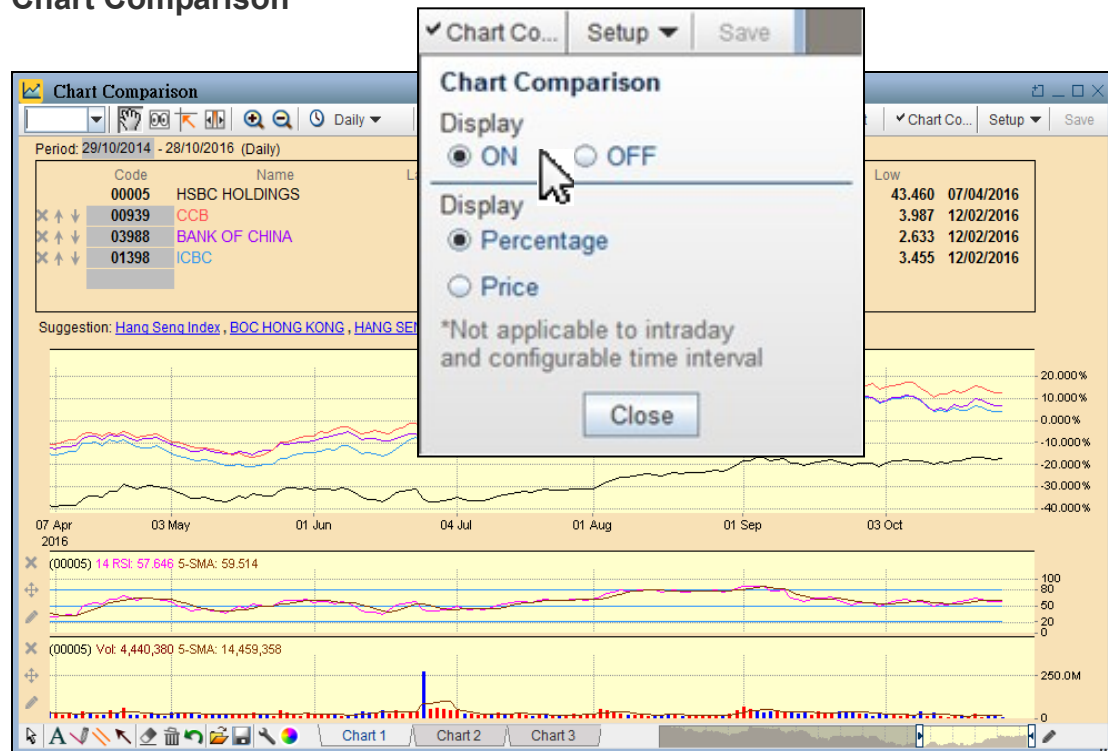


User may click the “ON/OFF” button to turn on or off the event chart. Then select the information you need from the curtain layer, such as dividend or result announcement, by putting a tick before it. After closing the layer, the information you need will be displayed and marked in an orange bar. User can view the headlines of that information by mouse-over the bar and the related news window will show in the windows form on the left when you double-click the relevant event bar. If user wants to remove or re-choose the particular information, just have to untick the selected item and close it.

\* The event chart mode is applicable to daily, weekly and monthly chart only.

## Using Display Options (Charts)

### Chart Comparison



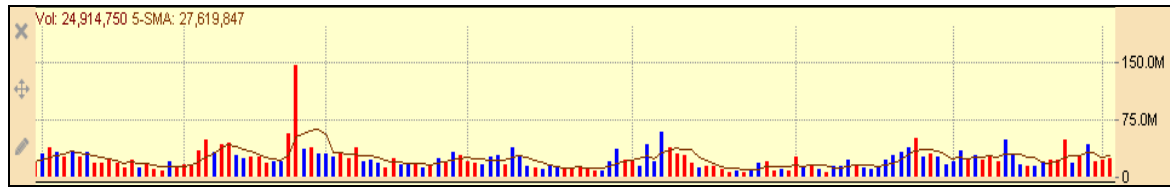
The newly-added chart comparison function enables user to compare and analyze various securities or indexes' trend at the same time.

- You have to click on “Compare” button and activate the chart comparison mode by clicking display “ON” from the curtain layer. Then select the display mode you want, either by percentage or price.
- You may type in the security code or name, or select the desired index from the pull-down menu. You can also click on the code suggestion to compare.
- User can compare 6 index or securities at the same time in maximum.
- User can alter the starting date of chart comparison at the upper left corner beside “Period”.
- If you want to remove any security/ index chart, you just click on “X” icon in front of security/ index code. Also, you can swap the display order by clicking the “Move Upward” or “Move Downward” icon before that code.


\* Chart comparison is applicable to daily, weekly and monthly chart only.

## Using Display Options (Charts)


### Edit Individual TIs setting/order



By clicking the “Pen” button, a “Quick Chart Setup” will prompt. You may first select the desired TIs from the pull-down menu, then enter the value to relevant edit box and also change the colour and style of lines. If it is just a one-time amendment, you have to click “Apply” to apply the changes and click “Save” to save all changes for further references.

By clicking the “X” button, you can remove the additional TI chart. If you want to re-order different additional TI charts, just click on the  button on the left and move it to appropriate location.

### Adjust Chart Scale

The proportion of Price Chart and TIs is configurable. Mouse-over the bottom border of the main chart and top border of the first additional TIs chart will show the cursor . It can drag and adjust the proportion accordingly. Then click “Save” to save all the changes made.

### Edit Chart Range

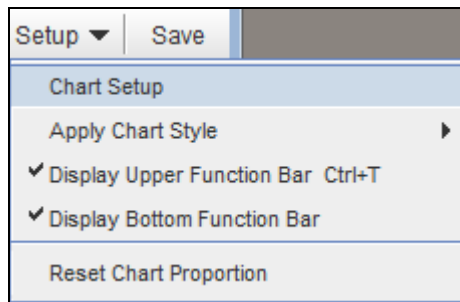


User can drag the scrollbar under the chart to change the time range. You can drag the scrollbar to the left for older data and to the right for recent data; or you can mouse over the left-hand side of the timescale and adjust the time range when a doubled-head arrow appears. Also, you can click the “Pencil” button on the right-hand side of the timescale to change the exact start date and end date and data range display.



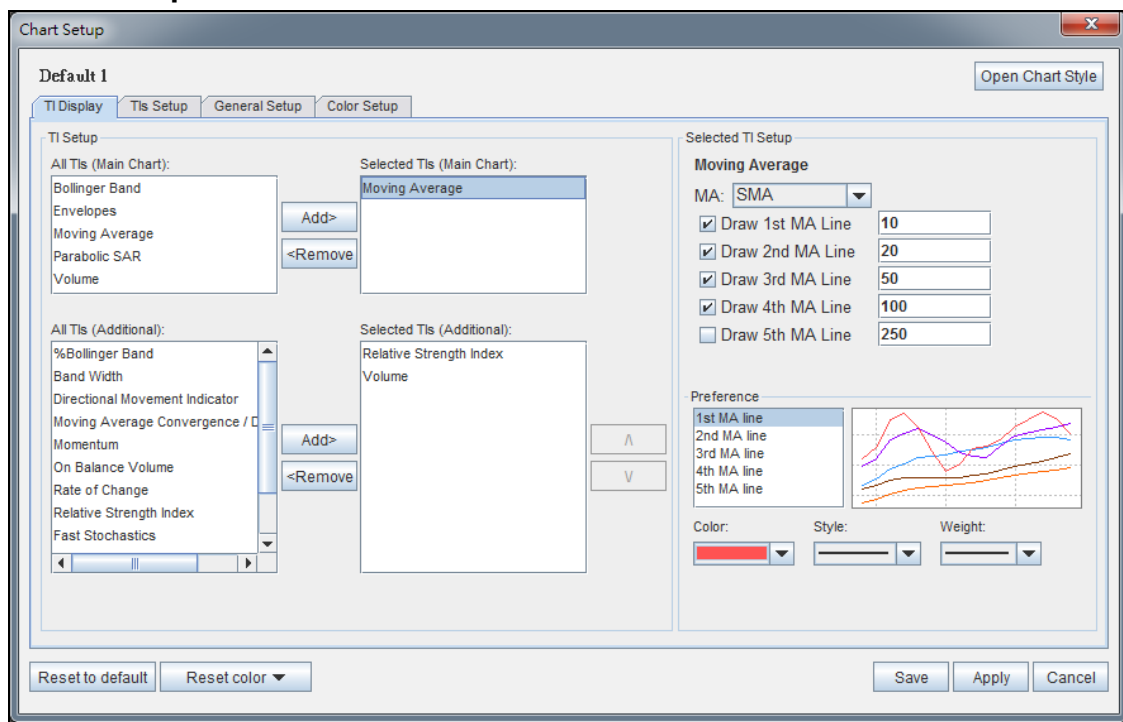
## Using Display Options (Charts)

### General Setup



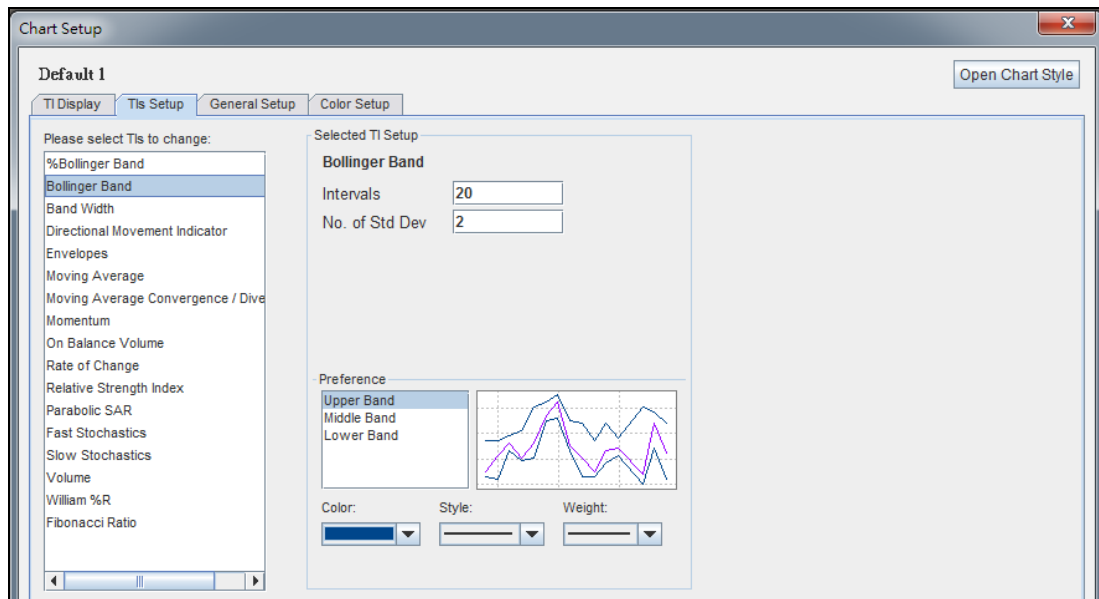
User can click “Setup” button on upper left corner and select various settings from the pull-down menu.

### Chart Setup

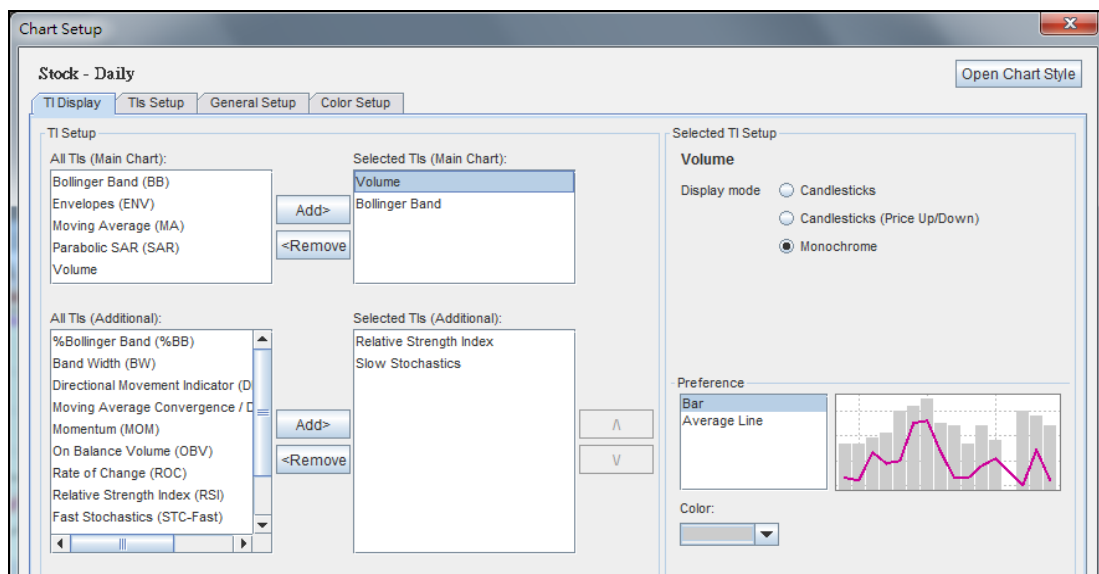


On TIs Display tab, maximum of 5 TIs and 4 TIs can be selected in the main chart and additional TI charts respectively. User can change individual TI's value, the color, style and weight of lines on the right-hand side of the window.

## Using Display Options (Charts)

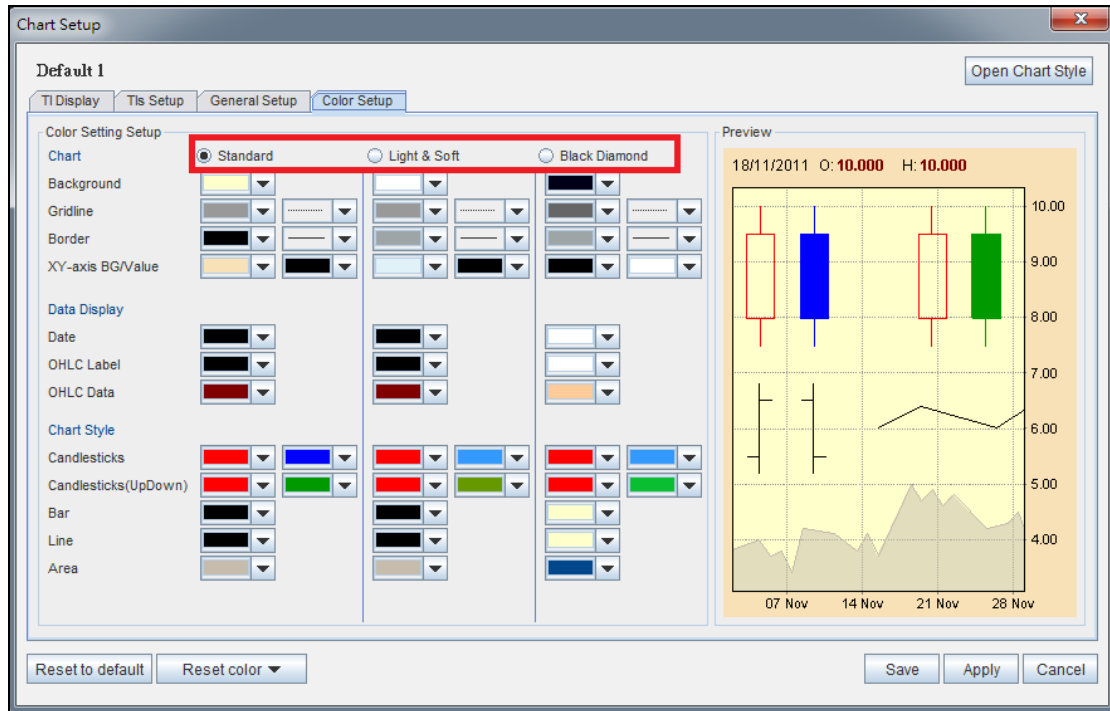


On TIs Setup tab, you will be able to configure the settings of any TIs. You can first select the TI that you want to make changes on the left, and then amend the settings on the right, for example, the value of TIs, the colour, the style and the weight of lines.



In General Setup tab, user can select the chart style and interval needed. For example, the candlesticks, bar chart, and the chart interval like minute and daily chart etc. Besides, user can edit the color and style of lines, the text and the color of text background from the pull-down menu. You can preview the selected configuration of text and text background with the preview function below.

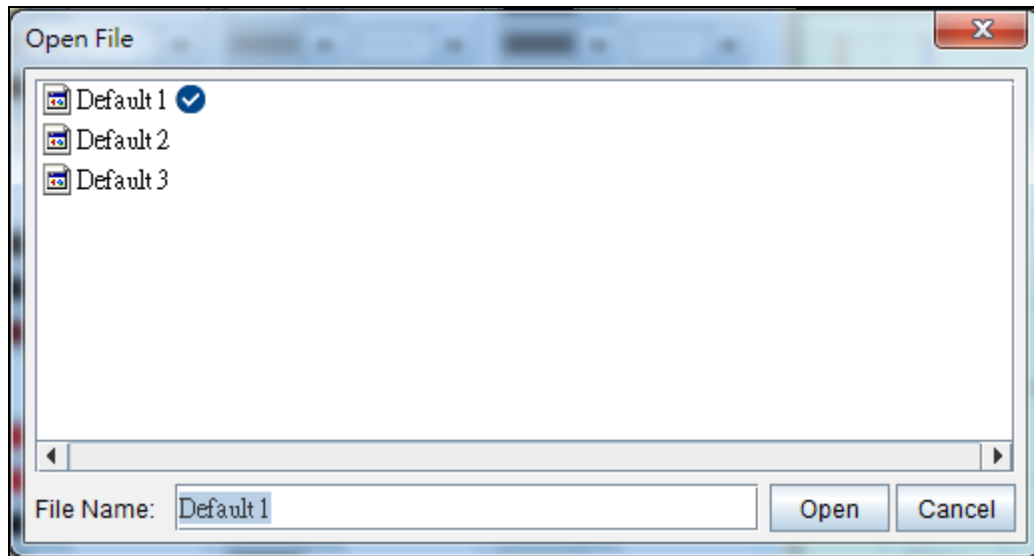
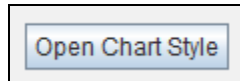
## Using Display Options (Charts)



On Color Setup tab, 3 color themes are available to choose, which are Standard, Light & Soft and Black Diamond. User can edit the color setup of charts, data display and chart types with personal preference and preview the changes with the preview function on the right.

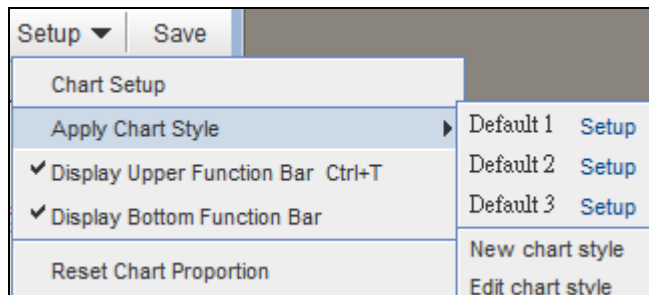
After modifying, user have to click “Apply” button to apply the changes if it is just a one-time amendment and click “Save” to save all changes for further references. By clicking “Reset value to default” button, user can reset the value to system default. By clicking “Reset colour to default” button, user can reset the modified colour theme to system default.

## Using Display Options (Charts)



By clicking “Open Chart Style” button, a file dialog box will pop up for user to open other default styles of chart and allow editing it individually.

### Apply Chart Style



User can open the saved chart styles from “Apply Chart Style” and edit.

### Upper/Bottom Function Bar

User can choose to show or hide the upper/bottom function bar by their personal preferences. It facilitates in adjusting the proportion of chart display.

### Reset Chart Proportion

User can click it to reset the chart proportion to default accordingly.

## Using Display Options (Charts)

---

### Chart Editing



Pointer: If user wants to change the line's position and angle, press "Pointer" button and move the mouse pointer on the existing lines. Then, user may see parallel dots on it and change the drawn line to an ideal position.



Text: User may click on this button and make text remarks on the chart with either Chinese or English.



Trend Line: User may draw a trending line by positioning the mouse pointer at a starting point on the chart. Then click and hold the left mouse button while moving the mouse pointer to an ending point. An uptrend or downtrend line will then appear for you to observe the market's trend.



Parallel Line: User may also press this button to draw horizontal support and resistance lines on the chart for market analysis.



Trend Line: By pressing the button, user can position the mouse pointer where you want the line to begin, and then drag the mouse. An arrow line will appear pointing at the direction you want.



Clear Editing Objects: By clicking the "Clear" button, and moving the mouse pointer to the line, arrow or text frame that you want to delete, then the object will be erased. All previous editing on the chart will be deleted permanently while clicking the "Clear All" button.



Undo: User may press this button to undo the previous changes did in the chart, or simply erase it by clicking "Ctrl" + "z" button.



## Using Display Options (Charts)

---

Open/ Save Edit Chart: To save the drawn item on the chart, user may click the “Save” button and save with a filename.

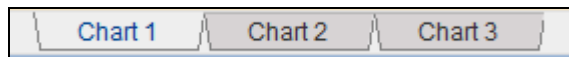
If user wants to open the saved file, you may click the “Open” button at the left and a dialogue box for opening file will popup.



Edit Tools Setup: A dialog box will popup by clicking this button and user may edit the tools’ setup.

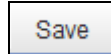


Color: User may change the color of lines and text remarks by clicking this button.



Tabs Control: The newly-added tabs control enables user to view 3 different charts. You just simply click the tabs “Chart 1/2/3” under the chart to display the selected chart. Each chart has its own technical indicator setting.

### Save function



User may click the “Save” button on the upper right corner to save the changes made to the chart.