

Using Display Options (Watch List)

2.12 Watch List

2.12.1 Watch List (HK)

The screenshot shows the 'Watch List (HK Stock)' window. On the left, there are two buttons: 'Watch List (HK Stock)' and 'Watch List (A-Share)'. The main window displays a table of securities with the following columns: Name, Nominal, Chg, %Chg, Turnover, and Bid. The table lists various futures and stocks, including Hang Seng Index Futures, Mini H-shares Index Futures, and various bank and fund securities. The status bar at the bottom shows 'Total Mkt. Value: 0', 'Total cost: 0', and 'Profit/Loss: 0 (0.00%)'.

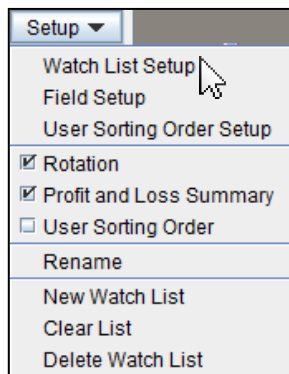
Name	Nominal	Chg	%Chg	Turnover	Bid
INGS	94.600	-1.500	-1.561	102.130M	94.550
DINGS	58.150	-0.950	-1.607	351.966M	58.100
INTL	11.880	-0.160	-1.329	3.054M	11.860
AL	4.620	-0.150	-3.145	7.415M	4.610
REIT	9.350	-0.040	-0.426	3.632M	9.350
RTNERS	6.760	-0.050	-0.734	23.728M	6.750
UL SKY	2.260	0.000	0.000	45.260K	2.220
UL SKY	14.200	+0.040	+0.282	47.576M	14.180
BOC HONG KONG	26.450	-0.500	-1.855	111.897M	26.400
TRACKER FUND	22.600	-0.450	-1.952	793.341M	22.550
HKT-SS	10.420	-0.020	-0.192	8.205M	10.400
CS-HSBC@EC1704E	0.111	-0.010	-8.264	11.636M	0.110
BI-HSBC@EC1705A	0.182	-0.028	-13.333	7.673M	0.180
HT#HSBC RC1709A	0.049	-0.008	-14.035	84.880K	0.047
EA#HSBC RC1712A	0.042	-0.009	-17.647	763.440K	0.041
HS China Enterprises I...	9404.70	-255.15	-2.641	4.846B	
Hang Seng Index Futu...	22419	-510	-2.224		22413
Mini H-shares Index F...	9392	-281	-2.905		9392
Hang Seng Index	22454.68	-454.79	-1.985	8.025B	

In the Watch List (HK Stock), you may create multiple portfolios to monitor a number of stocks, warrants, indexes, or futures in one window at the same time. Each portfolio can save up to 500 securities. You may also select the fields to be displayed, such as bid, ask, nominal, change, etc. In addition to the real-time quote price information, user can enter the average purchase price and holding shares for real-time calculation of the profit and loss of individual securities as well as the entire portfolio. There are 4 different display formats which are List, Quote, Chart and Summary.

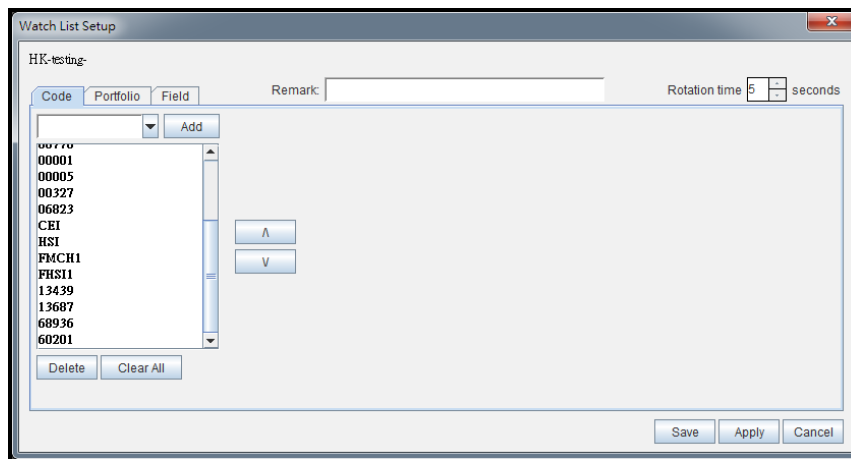
① Maximum Number of Windows Open: **4** (incl. HK-Share & A-Share)

Using Display Options (Watch List)

Setting Up Quotation Display



Add / Delete Securities



User may click the “Setup” button on the top right corner and then click “Watch List Setup” button to open watch list setup page. For adding securities, you may input the code and then click “Add” button at the Code tab. For removing securities, you may select the securities by mouse and then click “Delete” button at the Code tab.

Using Display Options (Watch List)

Add / Delete Transaction Data

User may click the “Setup” button on the top right corner and then click “Watch List Setup” button to open watch list setup page. At the Code tab, input the trading records, such as shares, average price etc., to calculate the profit or loss on a real time basis.

Display Format: List

Code	Chi Name	Eng Name	Nominal	Chg	%Chg	Turnover
00001	長和	CKH HOLDINGS	↓ 94.900	-1.200	-1.249	112.714M
00005	滙豐控股	HSBC HOLDINGS	↓ 58.100	-1.000	-1.692	398.390M
00152	深圳國際	SHENZHEN INTL	↓ 11.820	-0.220	-1.827	3.949M
00327	百富環球	PAX GLOBAL	↓ 4.600	-0.170	-3.564	8.911M
00778	置富產業信託	FORTUNE REIT	↓ 9.370	-0.020	-0.213	3.772M
00806	惠理集團	VALUE PARTNERS	↓ 6.760	-0.050	-0.734	26.915M
01260	皓天財經集團	WONDERFUL SKY	↓ 2.240	-0.020	-0.885	107.540K
02282	美高梅中國	MGM CHINA	↑ 14.240	+0.080	+0.565	52.359M
02388	中銀香港	BOC HONG KONG	↓ 26.450	-0.500	-1.855	123.489M
02800	盛富基金	TRACKER FUND	↓ 22.600	-0.450	-1.952	857.497M
06823	香港電訊—S S	HKT-SS	↓ 10.400	-0.040	-0.383	9.257M
13439	滙豐瑞信七四購E	CS-HSBC@EC1704E	↓ 0.111	-0.010	-8.264	11.858M
13687	滙豐中銀七五購A	BI-HSBC@EC1705A	↓ 0.180	-0.030	-14.286	7.687M
60201	滙豐海通七九牛A	HT#HSBC RC1709A	↓ 0.048	-0.009	-15.790	84.880K
68936	滙豐東亞七乙牛A	EA#HSBC RC1712A	↓ 0.042	-0.009	-17.647	897.840K
CEI	恒生中國企業指數	HS China Enterprises I...	↓ 9407.29	-252.56	-2.614	5.834B
FHSI1	恒生指數期貨(現月)	Hang Seng Index Futu...	↓ 22438	-491	-2.141	
FMCH1	小型H股指數期貨(現月)	Mini H-shares Index F...	↓ 9399	-274	-2.833	
HSI	恒生指數	Hang Seng Index	↓ 22462.48	-446.99	-1.951	9.395B

Total Mkt. Value: 0 Total cost: 0 Profit/Loss: 0 (0.00%) (Calculation is in terms of ...)

The display order can be sorted by different fields. User may click the column header to sort the field in descending order at default. Besides, each column can be dragged and dropped to another location within the same window.

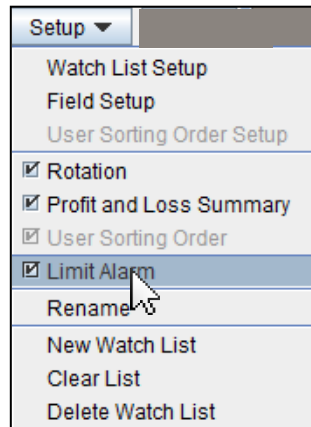
Using Display Options (Watch List)

Display Format: Quote

Symbol	Company Name	Current Price	High	Low	% Change
02800	TRACKER FUND	22.600	23.200	22.550	-1.952%
00152	SHENZHEN INT'L	11.820	12.100	11.800	-1.827%
02282	MGM CHINA	14.240	14.480	14.060	+0.565%
02388	BOC HONG KONG	26.450	27.150	26.350	-1.855%
01260	WONDERFUL SKY	2.240	2.290	2.220	-0.885%
00806	VALUE PARTNERS	6.760	6.930	6.740	-0.734%
00778	FORTUNE REIT	9.370	9.480	9.350	-0.213%
00001	CKH HOLDINGS	94.850	96.700	94.500	-1.301%
00005	HSBC HOLDINGS	58.100	59.450	58.000	-1.692%
00327	PAX GLOBAL	4.610	4.850	4.600	-3.354%
06823	HKT-SS	10.400	10.480	10.380	-0.383%
CEI	HS China Enterprises Index	9400.41	9730.13	9379.25	-2.686%

For the convenience of securities comparison, quote list displays related quotation information, such as nominal, change, % change, best bid, best ask etc, to closely monitor the portfolio's performance.

Limit Alarm Setup

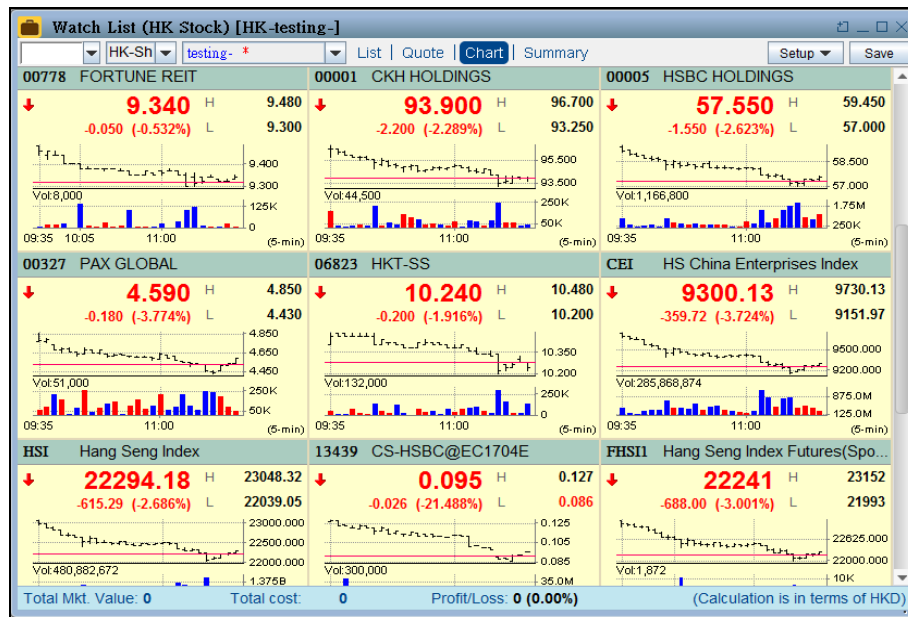


Symbol	Company Name	Current Price	High	Low	% Change
00327	PAX GLOBAL	4.530	4.850	4.430	-5.031%
		Bid	4.550	Ask	
		4.530	4.550		
		53%		47%	

User may click the "Setup" button on the top right corner and then click "Limit Alarm" button to turn on this function. Then, the quote window will show a 3 seconds flash notification with yellow color background when the limit is reached.

Using Display Options (Watch List)

Display Format: Chart



User may right click the chart by mouse to choose 5-min or daily chart to monitor the stock price's trend. If the mouse pointer is moved over the chart, a value cursor will appear and the corresponding nominal price and traded volume will be shown.

Display Format: Summary

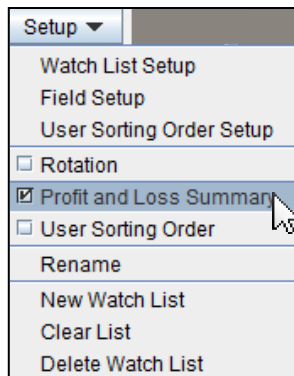
Watch List	Cost	Mkt. Value	Profit/Loss	%Profit/Loss	No. of Gain	No. of Loss	Remark
1. A-testtest--	11,300	9,772	-1,528	-13.52	0	3	9999999
2. HK-F1_Portfolio	0	0	0	0.00	0	0	
3. HK-F3_Portfolio	0	0	0	0.00	0	0	
4. HK-F3_Portfolio_ba...	0	0	0	0.00	0	0	
5. HK-testing-	446,480	413,730	-32,750	-7.34	4	4	000000

Top 10 Profit of stock		Cost	Mkt. Value	%Profit	Top 10 Loss of stock		Cost	Mkt. Value	%Loss
1,01260	WONDERFU...	10,080	17,440	+73.02	1,00005	HSBC HOLDI...	160,400	115,200	-28.18
2,00778	FORTUNE R...	39,000	56,100	+43.85	2,00806	VALUE PART...	30,800	26,880	-12.73
3,02388	BOC HONG ...	50,000	52,500	+5.00	3,02800	TRACKER F...	75,600	67,050	-11.31
4,06823	HKT-SS	50,000	51,200	+2.40	4,00327	PAX GLOBAL	30,599	27,359	-10.59

After inputting the holding shares and average purchase price, this page will show the information of cost, market value and %profit/loss for each portfolio in the upper panel and the summarized top 10 profit and loss of stocks of today for selected portfolio in the lower panel. The information will be updated for every 15 seconds.

Using Display Options (Watch List)

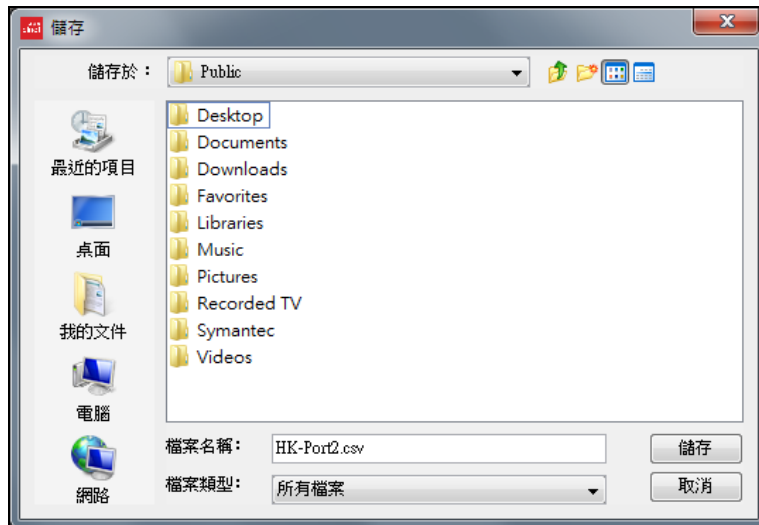
Profit and Loss Summary



Total Mkt. Value: 413,820 Total cost: 446,480 Profit/Loss: -32,660 (-7.31%) (Calculation is in terms of HKD)

User may click the “Setup” button on the top right corner and then click “Profit and Loss Summary” button to turn on this function. The summarized profit and loss information of the existing portfolio will be shown at the bottom.

Export to Excel



In order to export the latest portfolio record and performance summary in excel file format, user needs to click the “Export” button () on the top right corner to open a dialog box, and then save the excel file in specific location path with self-defined file name.

Using Display Options (Watch List)

2.12.2 Watch List (A-Share)

Code	Chi Name	Nominal	%Chg	Chg	Turnover	No. of Tr	Bid	Ask	Average
滬 600000	浦發銀行	14.950	-0.100	-0.664	810.914M	9248	14.910	14.920	
深 002594	比亞迪	59.010	+3.770	+6.825	1.383B	4020	59.000	59.010	
深 000002	萬科A	13.150	-0.110	-0.830	422.423M	3696	13.140	13.150	
滬 601939	建設銀行	5.290	-0.130	-2.398	295.559M	7446	5.290	5.300	
深 000776	廣發證券	13.580	-0.610	-4.299	554.030M	3674	13.570	13.580	
滬 601318	中國平安	30.770	-1.000	-3.148	3.148B	21489	30.760	30.770	
滬 601398	工商銀行	4.370	-0.070	-1.577	486.081M	7901	4.370	4.380	
滬 601628	中國人壽	26.470	-0.550	-2.036	306.324M	6770	26.460	26.470	
深 000157	中聯重科	5.150	-0.150	-2.830	315.858M	3860	5.140	5.150	
滬 601988	中國銀行	3.800	-0.070	-1.809	656.229M	13790	3.800	3.810	
深 000898	鞍鋼股份	4.840	-0.200	-3.968	119.178M	2464	4.830	4.840	
滬 600036	招商銀行	17.730	-0.230	-1.281	854.956M	10252	17.730	17.740	
滬 601288	農業銀行	3.100	-0.040	-1.274	567.272M	11536	3.090	3.100	
滬 601857	中國石油	8.360	-0.190	-2.222	438.115M	9555	8.360	8.370	
滬 601766	中國中車	13.580	-0.710	-4.968	3.775B	51304	13.580	13.590	
滬 600028	XD中國石化	4.850	-0.100	-2.020	612.273M	12368	4.850	4.860	
滬 601601	中國太保	23.010	-0.840	-3.522	428.771M	8587	22.990	23.000	
深 000063	中興通訊	16.240	-0.380	-2.286	606.640M	3996	16.240	16.250	
深 002202	金風科技	14.050	-0.370	-2.566	337.563M	3802	14.040	14.050	

In the Watch List (A-Share), you may also create multiple portfolios to closely monitor both Shanghai and Shenzhen securities information in one window at the same time. There are 4 different display formats which are List, Quote, Chart and Summary. The function and operation is the same as Watch List (HK Stock), kindly refer to the introduction as above.

* Watch List (A-Share) is an optional value-added package. User needs to subscribe separately for A-Share functions.