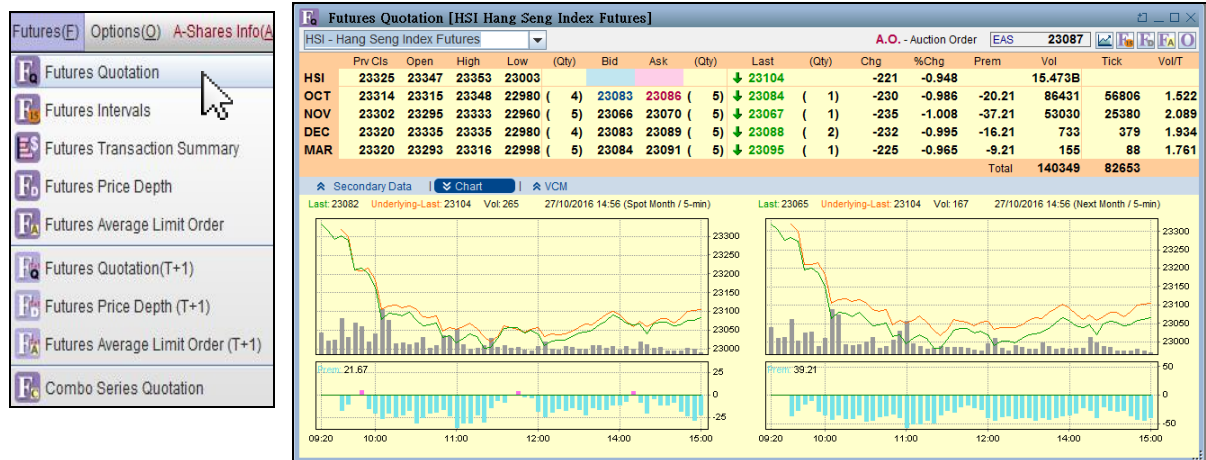


## Using Display Options (Futures)

### 2.5 Futures

#### 2.5.1 Futures Quotation



Futures Quotation displays the real-time quotation of index or stock futures provided by Hong Kong Futures Exchange Limited (HKFE). User can view the quotation of all trading months in this section. User just have to click the pull-down menu at the top left corner of the window or input the code directly to select different indexes or stock futures quotation.

① Maximum number of windows open: **3**

#### View the Estimated Average Settlement Price (EAS)

EAS **23087**

User can find the EAS at the top right corner of the window. EAS is the arithmetic average price of the underlying index taken every 5 minutes and all futures contracts will be settled against the EAS on the expiration day.

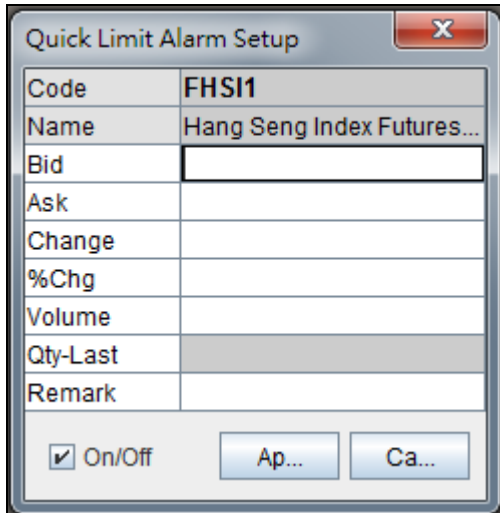
#### Quick Market Switch



There are several short-cut buttons at the top right corner of the window. These facilitate user to access corresponding function windows directly.

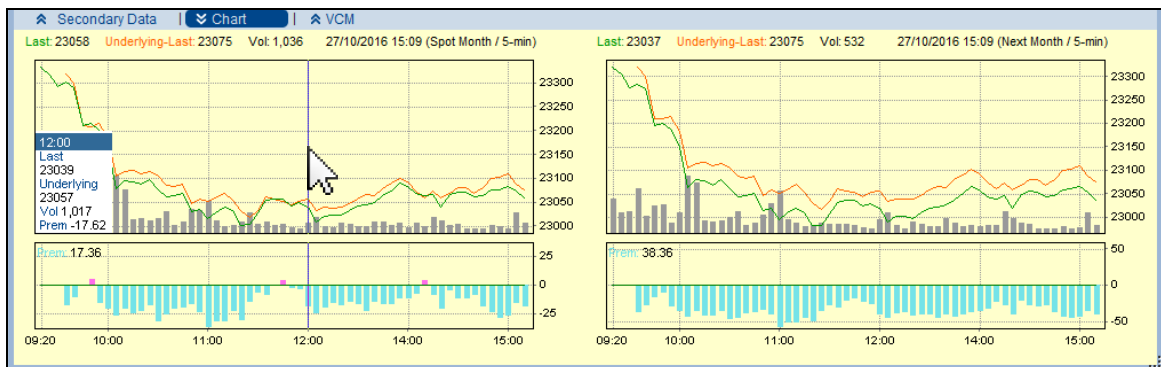
## Using Display Options (Futures)

### Quick Limit Alarm Setup



User may set the limit alarm on bid, ask, change, % change, and volume at once by clicking the coloured flames of “Bid” or “Ask”.

### Newly Added Real-time Chart



User can view the real-time 5 minute chart and premium chart of spot month and next month at the same time so as to understand the transaction trend much more easily. Moreover, by moving the mouse pointer over the chart, a record selector will appear to display the corresponding time, price, volume and premium. For the premium chart, “Premium” and “Discount” will be shown in pink and pinkish blue respectively, to assist user in making analysis.

-“Premium” exists when the futures price is above spot price.

-“Discount” exists when the futures price is below spot price.

## Using Display Options (Futures)

### Display Secondary Data

	L.High	L.Low	Pv Cls	Chg	G.O.I	Chg	N.O.I	Chg	Expiry	C.O.P. (AM)	Cls Price (AM)	C.O.P (PM)	Cls Price (PM)
OCT	24360	22760	152514	+30350	63774	-43715	14707	-14764	28/10/2016	23315	23039	23035	
NOV	24075	22855	82648	+30472	109939	+45420	36198	+15219	29/11/2016	23295	23018	23009	
DEC	24292	19025	795	+357	13239	+95	9606	+275	29/12/2016		23034		
MAR	24298	21600	226	+157	2045	+31	1700	+51	30/03/2017		23028		
Total/Net			236183	+61336	188997	+1831	62211	+781					

User can click on “Secondary Data” for more relevant information, including the highest and lowest Gross Open Interest (G.O.I) and Net Open Interest (N.O.I) with their changes of all trading months. Also, the Calculated Opening Price (C.O.P) and Closing Price of both AM and PM sections are newly added for reference.

G.O.I: Open Interest is the total number of outstanding contracts that are held by market participants at the end of the trading day. It can also be defined as the total number of futures or option contracts that have not yet been exercised, expired, or fulfilled by delivery.

N.O.I: All the long and short positions in a particular contract held by an exchange participant are netted to arrive at either a net long or net short figure before being summed up to arrive at the N.O.I.

### 2.5.2 Futures Intervals

Futures Intervals [HSI Hang Seng Index Futures]											
- Hang Seng Index Futures		Contract Mth: OCT 2016		Interval: 15-min		Today High/Low					
Time	Open	High	Low	Last	Chg	%Chg	P	Vol	Tick	Vol/T	
HSI	23347	23353	23003	↓ 23082	-243	-1.042		5B			
Today	23315	23348	22980	↓ 23066	-248	-1.064		67	59826	1.512	
13:15	23035	23054	23005	↓ 23023	-291	-1.248		44	1748		
13:30	23024	23043	23003	↓ 23042	-272	-1.167	-16	2654	1577		
13:45	23043	23076	23039	↓ 23064	-250	-1.072	-14	2982	1836		
14:00	23065	23094	23062	↓ 23082	-232	-0.995	-10	2457	1911		
14:15	23082	23095	23054	↓ 23065	-249	-1.068	-7	3451	2007		
14:30	23066	23080	23036	↓ 23070	-244	-1.047	-11	3119	1862		
14:45	23069	23079	23055	↓ 23063	-251	-1.077	-17	1422	1122		
15:00	23062	23091	23061	↓ 23083	-231	-0.991	-25	2042	1769		
15:13	23083	23099	23043	↓ 23066	-248	-1.064	-16	3810	2813	1.354	
10SMA	23316		(Qty)	Bid	Ask	(Qty)	1-month H/L 22846 - 24077				
20SMA	23482		( 11 )	23065	23067	( 5 )	52 -week H/L				

Futures Intervals displays real-time quotation and records of every selected interval, which facilitates user to make precise analysis. Besides, the day high and day low of the futures index will be highlighted in blue so user can get the data in a glance.

## Using Display Options (Futures)

### Select Contract Month & Interval

To select the contract month or interval, user may just click the pull-down menu at the upper side of the window.

### 2.5.3 Futures Transaction Summary

The screenshot shows a window titled "Futures Transaction Summary [HSI H...". The window contains a pull-down menu for "I - Hang Seng Index Futures" and another for "Contract Mth: OCT 2016". Below these are filter options: "Time" with a radio button for "Whole..." and a time range from "09:00" to "16:15"; "Qty>=" with an input field; and "Price" with two input fields. A "VWAP:23072" label is present, along with "Reset" and "Filter" buttons. The main area is a table with columns "Time", "Last Price", and "(Qty)". The table contains 15 rows of transaction records, all with a time of "15:14". The last price values range from 23060 to 23065, and the quantity for each row is 1. At the bottom, it shows "Total downloaded: 5015 records" and "Filtered: 5015 records", with a link to "Click here to display previous 5000 records".

Time	Last Price	(Qty)
15:14	23060	1
15:14	23061	1
15:14	23060	1
15:14	23060	1
15:14	23061	1
15:14	23062	1
15:14	23061	1
15:14	23061	1
15:14	23062	1
15:14	23063	1
15:14	23063	1
15:14	23063	1
15:14	23065	1

Futures Transaction Summary displays the whole day transaction records with the VWAP. Also, the function of filtering enables user to search the transaction records by different criteria.

### Transaction Record Filter

User may first select the desired futures and contract month from the pull-down menu. Then, setup the criteria of time, quantity and/or price. The results will be shown after clicking the "Filter" button. Lastly, user can click "Reset" button to clear all filter setting.